

GLAZED

C C

6' 0" DOOR.

STONE SILL.
8' x 18" x 7' 0"

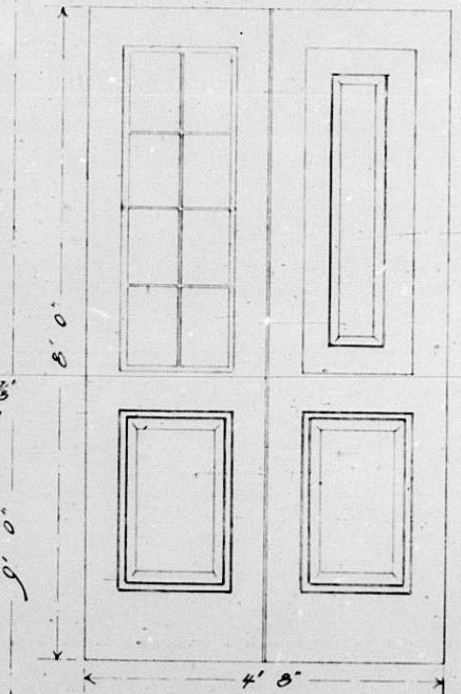


A A

1 1/2"

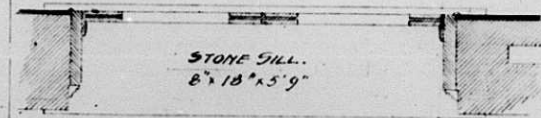
1 1/2"

3" AIR SPACE
TYPHOON
DETAIL AT A



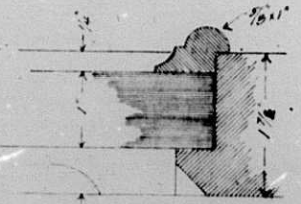
8' 0"

4' 8"

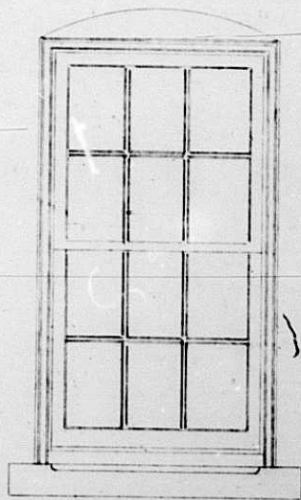


STONE SILL.
8' x 18" x 5' 9"

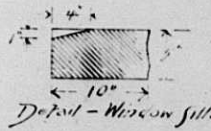
2 PAIRS DOORS & FRAMES.



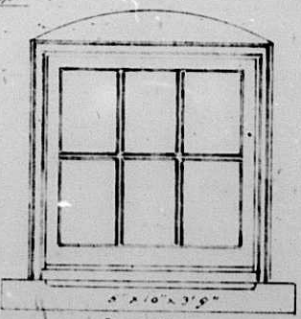
ENLARGED DETAIL
AT CC
FULL SILL.



2 OF THIS.



Detail - Window Sill.



2 x 10" x 3' 6"
2 OF THIS.

DRAWN BY L.H. ENG. 1st DES.
26 MARCH, 1916.