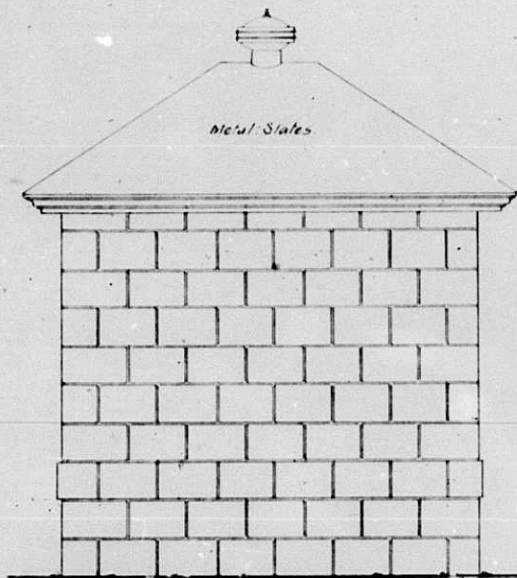


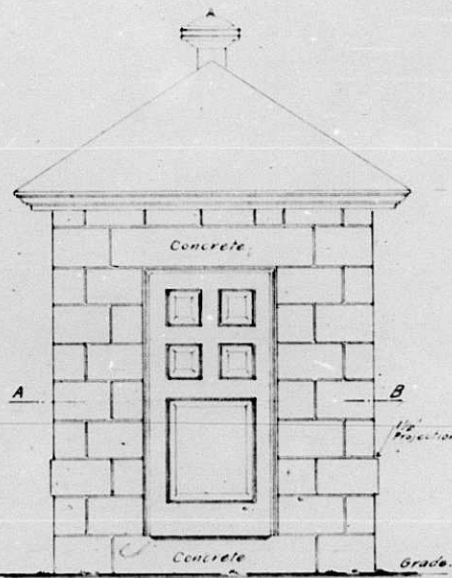
OIL HOUSE

Sheet 15

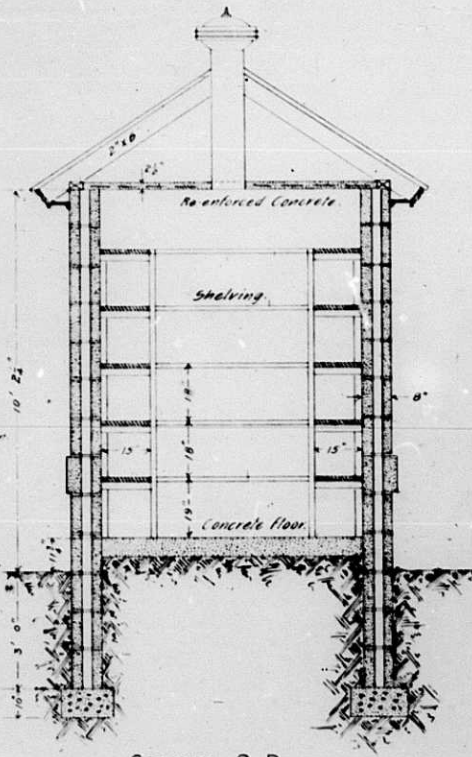
CONCRETE BLOCK CONSTRUCTION
CAPACITY: 500 GALLONS.



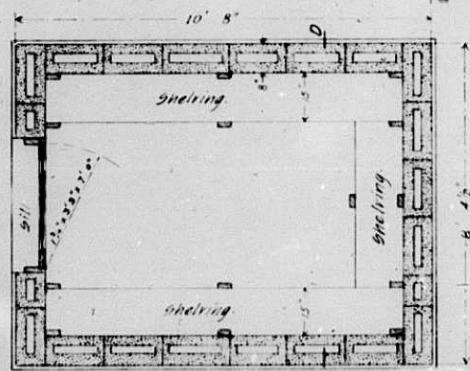
SIDE ELEVATION.



FRONT ELEVATION.



SECTION C-D.



SECTION A-B.

Scale: 1/2" = 1'

To be built later

Office of Light-House Engineer, 11th Dist.,
Detroit, Mich., December 10, 1903.

W.F. Beyer.