

BANKS.

Alpena National Bank—Incorporated February 1, 1883. Capital, \$50,000. Surplus, \$10,000. G L Maltz, pres; F W Gilchrist vice-pres; J C Comfort cashier. Opera House Block, cor 2d and Water.

Alpena Banking Co (private)—Comstock Bros proprs. Comstock Block, 221 N 2d.

BUILDING AND LOAN ASSOCIATIONS.

Alpena Loan and Building Association—O L Partridge sec. Office, cor 2d and Chisholm.

Railroad Loan and Building Association—F C Holmes pres, Michael O'Brien sec and treas; W T Sleator attorney. Office, Comstock Block.

CEMETERIES.

CATHOLIC.

Between Tuttle and Farmer, near Fair Grounds.

EVERGREEN (PROTESTANT).

Washington ave, west of Thunder Bay river. Jacob R. Beach sexton.

HEBREW.

Washington ave, west of Thunder Bay river.

NORWEGIAN.

Washington ave, west of Thunder Bay river.

CHURCHES.

BAPTIST.

Cor Lockwood and 3d. Organized and erected 1867. Rev F N Barlow pastor. Sunday services, 10.30 A M, 7.30 P M. Sunday School, 12.10 P M. Prayer Meeting, Thursday evening, 7.30.

WM. P. MAIDEN, M. D., SURGEON, PHYSICIAN AND GYNECOLOGIST.
Special Attention given to the Treatment of Diseases of Women and Children. Office at Residence, 114 West Chisholm Street.

CATHOLIC.

St Bernard's, Chisholm cor 5th. Organized 1864. New stone church erected 1883. T D Flannery pastor. Sunday services, 8 and 10.30 A M. Vespers, 7.30 P M. Catechism, 2 P M. Baptisms, 3 P M. Mass daily, 7 A M.

CATHOLIC—FRENCH.

St Anne's, 325 W Chisholm. Rev Th Blais pastor. Sunday services, 8 and 10 A M and 7 P M. Sunday School, 2 P M. Baptisms 2. P M. Mass, 7 A M daily.

CATHOLIC—POLISH.

Dock cor Miller. Rev P Opyrchalski pastor. Sunday services, 10 A M and 4 P M. Mass, 8 A M. Sunday School, 2 P M.

CONGREGATIONAL.

Cor 2d and Lockwood. Organized March 2, 1862. Rev H H Van Auken pastor. Services, 10 A M, 7.30 P M (winter, 7 P M.) Sunday School immediately after morning service. Prayer meeting, Thursday evening, 7.30 P M. Communion, first Sundays in January, March, May, July, September and November.

EPISCOPAL.

Trinity Church, Washington ave, bet 1st and 2d. Organized 1865. New church erected 1883. Sunday services, 8 and 10.30 A M, 7.30 P M. Sunday School, 12.30 P M. Week day services, Friday evening and Saints' days.

HEBREW.

Synagogue Beth Tefelo, cor Chisholm and 2d. Organized 1877. Sabbath services, 9 to 11 A M.

LUTHERAN—GERMAN.

St Paul's, 719 2d. Organized 1874. Rev F W Wendt pastor. Sunday services, 10.30 A M. Sunday school, 2 P M.

School Books and Supplies At Centennial Book Store.

LUTHERAN—GERMAN EVANGELICAL.

Dock, cor Clark. Rev H C Kuechle, pastor. Sunday services, 10 A M.

LUTHERAN—NORWEGIAN.

Dunbar bet 2d and 3d. Rev J A Whang pastor. Sunday services, 10.30 A M. Sunday School, Saturdays from 9 to 12.

METHODIST.

New Church, Chisholm bet 2d and 3d. Rev E A Bray pastor. Sunday services, 10.30 A M and 7.30 P M. Sunday School, 12 M. Prayer meeting, Thursday evening at 7.30 P M.

UNITED PRESBYTERIAN.

Washington ave, cor 3d. Rev W W Currie pastor. Sunday services, 10.30 A M, 7.30 P M. Sunday School, 11.45 A M. Prayer meeting, Thursday evening.

MISCELLANEOUS CHURCHES.

Perfectionists' Church, White bet 1st and 2d. Mrs W F Furbusch preacher. Services Sunday and Wednesday at 3 P M. Sunday School, 10.30 A M.

LIBRARY.

UNION SCHOOL LIBRARY OF THE CITY OF ALPENA.

Centennial block. Organized 1873. 2,400 volumes. Free circulation. Under control of Board of Education. Miss E C Nason, Librarian.

MILITARY.

Commander-in-Chief—Governor Cyrus G Luce, Lansing.
Brigadier General and Adjutant General—D B Ainger, Charlotte.

REAL ESTATE and PINE LANDS BOUGHT and SOLD.
W. E. ROGERS, Johnson Block, Cor. 2d and Water Sts.

Lieutenant Colonel and Assistant Adjutant General—W W Cook, Lansing.

Brigadier General and Inspector General—F D Newberry, Coldwater.

Major and Assistant Inspector General—E F Douglass, Houghton.

Brigadier General and Quartermaster General—G M Devlin, Jackson.

Lieutenant Colonel and Assistant Quartermaster General—L F Harter, Detroit.

Colonel and Paymaster General—E W Cobb, Adrian.

Colonel and President State Military Board—E C Fox, Grand Rapids.

Colonel and Treasurer State Military Board—F E Farnsworth, Detroit.

Colonels and A D C to the Commander-in-Chief—J N Cox, Calumet; F J Haynes, Port Huron; S R Dixon, Detroit; J W Kerns, East Saginaw.

Major and Military Secretary—M D Campbell, Lausing.

Major and Judge Advocate—R S Pratt, Bay City.

BRIGADE OFFICERS.

Brigadier General—C S Brown, Flint.

Lieutenant Colonel and Assistant Inspector General—J L Willett, Flint.

Lieutenant Colonel and Assistant Quartermaster General—G T Warren, Flint.

Lieutenant Colonel and Surgeon—J B Book, Detroit.

Captains and A D C—D C Sauer, Jackson; F S Norcross, Menominee.

THIRD REGIMENT, MICHIGAN STATE TROOPS.

Field and Staff.

Colonel—C R Hawley, Bay City.

Lieutenant Colonel—F B Lyon, Calumet.

John F. Eby & Co., BOOK AND JOB PRINTERS
65 and 67 W. CONGRESS ST., DETROIT.

Major—C G Yawkey, East Saginaw.
Surgeon—Arthur Wilkinson, Alpena.

ALPENA GUARDS—CO. B, THIRD REGIMENT M. S. T.
Meets every Friday evening at 8 o'clock in the armory, Opera House blk.
Captain—W D Hitchcock.
1st Lieutenant—W H Broadwell.
2d Lieutenant—J L Morrow.

NEWSPAPERS.

Alpena Pioneer The—(Rep). Weekly. Established 1866.
Published every Friday by Henry C Hamill. Subscription \$1.50 per annum. 115 and 117 Water.
Alpena Weekly Argus—(Dem). Weekly. Published every Wednesday by J C Viall. Subscription \$1.00 per annum. Union block, cor River and 2d.
Labor Journal—(Ind). Weekly. Published every Friday by James Collins. Subscription \$1.00 per annum. Culligan block, cor 2d and Chisholm.

POSTOFFICE.

Located in Culligan block, 2d st. Office hours from 7 A M to 8 P M; Sundays from 9 to 10 A M; registry and money order department from 8 A M to 5 P M; Saturdays to 4 P M. Patrick Culligan, postmaster.

Orders are issued in sums of not more than \$100. Larger amounts may be transmitted to the same person by additional orders.

Rates of orders to any part of the United States.—Not exceeding \$5, 5 cents; \$10, eight cents; \$10 to \$15, ten cents; over \$15 and not exceeding \$30, fifteen cents; over \$30 and not exceeding \$40, twenty cents; over \$40 and not exceeding \$50, twenty-five cents.

Sewing Machines, Needles, Oils and Supplies
C. L. BABCOCK, Globe Hotel Block.

Dominion of Canada.—For orders not exceeding \$10, fifteen cents; over \$10 and not exceeding \$20, thirty cents; over \$20 and not exceeding \$30, forty-five cents; over \$30 and not exceeding \$40, sixty cents; over \$40 and not exceeding \$50, seventy-five cents.

Great Britain.—For orders not exceeding \$10, twenty-five cents; over \$10 and not exceeding \$20, fifty cents; over \$20 and not exceeding \$30, seventy cents; over \$30 and not exceeding \$40, eighty-five cents; over \$40 and not exceeding \$50, one dollar.

Germany.—For orders not exceeding \$10, fifteen cents; over \$10 and not exceeding \$20, thirty cents; over \$20 and not exceeding \$30, forty-five cents; over \$30 and not exceeding \$40, sixty cents; over \$40 and not exceeding \$50, seventy-five cents. No fraction of a cent to be introduced into an order.

Postal notes up to \$4.99, fee three cents.

RATES OF POSTAGE.

Postage.—The postage on letters to be forwarded in the mails to any part of the United States is two cents per ounce.

Postage to all countries included in the Universal Postal Union.—For prepaid letters, five cents per half ounce; for unpaid letters received, ten cents per half ounce; for postal cards, two cents each; for newspapers, if not over two ounces in weight, one cent each; for books, or other printed matter, legal and commercial documents, pamphlets, music, visiting cards, photographs, prospectuses, announcements and notices of various kinds, whether printed, engraved or lithographed, one cent per each weight of two ounces or fraction of two ounces; samples of merchandise, ten cents for each eight ounces or fraction thereof, and parcel not to exceed that weight for Canada.

Field & Gray, Stationery and Wall Paper,
—119 NORTH SECOND STREET.—

**For Sign Painting and Paper Hanging
go to C. E. HOWES, 307 W. Chisholm Street.**

42

R. L. POLK & CO.'S

REGISTERED LETTERS.

Valuable letters for any part of the United States and Canada, and the Universal Postal Union, will be registered on application, for which a charge of ten cents (in addition to the postage), will be made.

PUBLIC BUILDINGS, HALLS, ETC.

Alpine Block, 101 to 105 S 2d.
Arbeiter Hall, Dock street.
Bank Block, southeast cor 2d and Water.
Baptist Church, cor Lockwood and 3d.
Bolton & McRae Block, Dock cor Fletcher.
Brand's Block, Chisholm near cor 1st.
Catholic Church, Chisholm between 4th and 5th.
Centennial Block, corners Washington ave, 1st and Chisholm.
City Hall, southwest cor 3d and River.
Comstock Block, 217 to 221 N 2d.
Congregational Church, cor 2d and Lockwood.
County Jail, in block bounded by Chisholm, River, 8th and 9th.
Court House, in block bounded by 8th, 9th, Chisholm and Lockwood.
Creighton Block, *see Union Block.*
Culligan Block, 100 to 108 S 2d.
Davison Block, cor 2d and Chisholm.
Engine House No. 1, cor River and 3d.
Engine House No. 2, Fletcher between Dock and Miller.
Episcopal Church, Washington ave between 1st and 2d.
French Hall, northeast cor 13th and Chisholm.
German Lutheran Church, Dock between Clark and Lake.
Gillot Block, cor Fletcher and Dock.
Golling Block, 3d cor River.
Harshaw Block, 2d between Chisholm and River.

THE PLACE TO BUY GOOD } **Fontaine & Lalonde,**
BOOTS AND SHOES. } **132 WEST CHISHOLM STREET.**

**Langworthy & Hiser, } Books and Stationery,
—346 DOCK STREET.— } LAMPS, LAMP GLASSES, Etc.**

ALPENA CITY DIRECTORY.

43

Johnrowe Block, 106 and 108 N 2d.
Johnrowe & Donnelly Block, north side Chisholm between 1st and 2d.
Johnson Block, 105 to 111 Water.
Longshoremen's Hall, Water opposite 1st.
McDonald Block, River between 1st and 2d.
McDonald & Creighton Block, *see Union Block.*
Maltz Block, *see Opera House Block.*
Mason Block, Water between 1st and 2d.
Masonic Hall, 349 and 351 Dock.
Methodist Church, Lockwood near 3d.
Minton Block, 203 to 207 N 2d.
Myers Block, Water cor 2d.
National Union Hall, cor 2d and Chisholm.
Norwegian Lutheran Church, Dunbar between 2d and 3d.
Odd Fellows' Hall, Centennial Block.
Opera House Block, cor 2d and Water.
Owens Block, 410 Dock.
Pack Block, *see Johnrowe Block, also, Alpine Block.*
Potter Block, 125 and 127 north 2d.
Trinity Episcopal Church, Washington ave bet 1st and 2d.
Union Block (formerly known as McDonald Block), 2d cor River.
Union School, 2d between Dunbar and White.
Walkeen's Hall, 420 and 422 Dock.

RAILROADS.

The Detroit, Bay City and Alpena R R was extended to Alpena on October 11th, 1886, being the first railroad to reach this city. Trains leave and arrive daily, except Sunday, as follows: Mail and express leaves at 9.30 A M, and arrives at Detroit at 9.30 P M. The express leaves Detroit

L. C. MYER, ARTISTIC SOCIETY EMBLEM CARDS,
PROGRAMMES AND NOTE HEADS,
203 WEST CHISHOLM STREET.

FARMS FOR SALE. O. L. PARTRIDGE, 4 AND 5 DAVISON BLOCK.

44

E. L. POLK & CO.'S

every morning, except Sunday, at 8.35, and arrives at Alpena at 7.25 P M. An accommodation train arrives at 11.45 A M, and leaves at 12.45 P M, and carries a through mail both ways. Parlor cars attached to express trains.

SECRET AND BENEVOLENT SOCIETIES.

ARBEITER UNTERSTUETZUNGS VEREIN.

(German Benevolent Society.)

Alpena Lodge—Meets 1st Sunday of each month in Arbeiter Hall, Dock St. Louis Krimer, Pres; Charles Noack, Cor Sec; W F Woelk, Treas.

KNIGHTS TEMPLAR.

Alpena Commandery, No 34—Chartered 1883. Election of officers on Good Friday, or the regular conclave preceding Good Friday of each year. J N Kelley, E C; J H Ansell, G; F C Holmes, C G; J H Kerr, P; M N Bedford, S W; J J Fitzgerald, J W; D McRae, Treas; C B Greely, Rec Sec; Charles Golling, S B; G D Bradford, Sword Bearer; Arthur Hopper, Warden.

A. F. AND A. M.

Alpena Lodge, No 199—Regular communications held first Wednesday of each month at Masonic Hall, Bolton & McRae block. R J Kelley, W M; A G Hopper, S W; J J Fitzgerald, J W; J L Morrow, S D; J M Johnston, J D; Duncan McRae, Treas; Adam Ludwig, Sec; Denton Sellick, Tyler.

Hopper Lodge, No 386—Regular communications held first Tuesday of each month at Masonic Hall, Bolton & McRae block. F MacDonald, W M; J H Ansell, S W; J B Newton, J W; G D Bradford, Treas; C W Trask, Sec; G A McRae, S D; Denton Sellick, Tyler.

Wm. P. Maiden, M. D., Late Assistant Surgeon U. S. Army. ALL OPERATIONS IN SURGERY SCIENTIFICALLY PERFORMED. OFFICE AT RESIDENCE, 114 WEST CHISHOLM STREET.

Pure Drugs, CHEMICALS, PATENT MEDICINES and MINERAL WATERS, at ALPENA DRUG STORE. FRED L. TUPPER, Proprietor.

ALPENA CITY DIRECTORY.

45

Thunder Bay Chapter, No 74—Regular convocation held first Friday of each month, at Masonic hall, Bolton & McRae block. J H Kerr, H P; Frank White, K; J J Fitzgerald, Scribe; Duncan McRae, Treas; Adam Ludwig, Sec; Denton Sellick, Tyler.

A. O. U. W.

Pine Forest Lodge of Alpena, No 84—Meets every Thursday evening in Mason block. A W Ziem, M W; Henry Clothier, Recorder.

ANCIENT ORDER OF FORRESTERS.

Alpena Court, No 293—Meets first and third Fridays of each month, 8 P M, at National Union Hall. H V Holmes, C D H C R; A S Irving, C R; B C Morse, V C R; N M Eddy, F S; W H Leroy, R S; Frank Holmes, Treas; C M Parks, S W; C E Worthington, J W; Louis Krimer, S B; Richard Little, J B; G R Howes, P C R; T C Philips, Chaplain.

G. A. R.

Department of Michigan—Michael Brown, Big Rapids, Dept Com; N H Vincent, Big Rapids, A A G.

Lockwood Post No 139—Meets second and fourth Wednesday of each month, at A O U W Hall, Johnston block. Dr W P Maiden, P Com; W H Phelps, Sen V Com; Robert Stone, V Com; J J Potter, Q M; C M Deming, Adj; Dr W P Maiden, Surgeon; Wm Hoyer, O of D; John McCosh, O of G; Denton Sellick, Sergt-Maj.

ALBUMS, PHOTOGRAPH, AUTOGRAPH, SCRAP, At E. C. NASON'S, Centennial Block.

Lamps and Gas Fixtures, WARNER & CO.

202 N. Second Street.

46

R. L. POLK & CO.'S

Lockwood Women's Relief Corps, No 55—Meets first Tuesday afternoon of each month, at K of P Hall, River st bet 1st and 2d. Cly S Maiden, Pres; Frank B Potter, S V; Elizabeth Comfort, J V; Katherine Ansell, Sec; Emma H Lewis, Treas.

I. O. O. F.

Alpena Canton (under dispensation)—Meets every Thursday evening at Odd Fellows' Hall, Centennial block. J C Fockler, Captain; T V Atkinson, Lieut; James Hamilton, Ensign; Andrew Harshaw, Acct.

Alpena Lodge, No 170—Meets every Tuesday evening at Odd Fellows' Hall, Centennial block. Alexander Johnson, N G; Wm Stout, V G; A M McKay, Rec Sec; Dr V F Godfrey, Per Sec; James Hamilton, Treas.

Thunder Bay Encampment, No 87—Meets first and third Fridays of each month, at Odd Fellows' Hall, Centennial block. Wm Butler, C P; James Hamilton, Scribe; J C Fockler, H P.

KNIGHTS OF LABOR.

No 2120—Meets every Sunday afternoon, 3:30 o'clock, at National Union Hall.

K. OF P.

Fremont Lodge, No 74—Meets every Thursday evening, 8 o'clock, at National Union Hall. F L Richardson, C C; C F Buchanan, V C; I S Canfield, P; G H Warren, M of F; F A Kimball, K of R and S; Harry R Morse, M A; A E McGregor, I G; F E Clough, O G.

K. O. T. M.

Alpena Tent, No 103—Organized June 30th, 1883. M A Grant, P S K C; Henry Clothier, S K C; Charles Cook, S K L C; F S Ford, S R R K; J H Joslin, S K F K;

FOR FARM AND PINE LANDS go to **W. E. Rogers,** JOHNSON BLOCK, Cor. 2d and Water Sts.

Geo. H. Warren, Staple and Fancy Dress Goods.

343 DOCK STREET.

ALPENa CITY DIRECTORY.

47

James Helpes, S K Prel; J W Lyon, S K Phys; T J Stephens, S K Sergt; John McMasters, S K M at A; James Polson, S K 1st M of G; J C McDougall, 2d M of G; George Loyst, Sent; G H Findley, Pic.

NATIONAL DOTARE.

Meets every Wednesday evening, 8 P M, in Whitney block. Andrew Harshaw, Pres; G H Warren, Vice-Pres; J C Comfort, Tres; Joseph Cavanaugh, Sec and Coll.

NATIONAL UNION.

Meets every Friday evening, 8 o'clock, at their hall, cor 2d and Chisholm. G M Lewis, Pres; Charles Cook, Sec.

ROYAL ADELPHI.

Alpena Conclave, No 62—Meets first and third Tuesdays of each month, at 8 o'clock, at National Union Hall. G W Townsend, P C; Charles Cook, Com; I S Canfield, Sec; J H Cobb, Collector; J W Creighton, Treas.

ROYAL ARCANUM.

Alpena Council, No 143—Meets second and fourth Tuesdays of each month at National Union Hall, Whitney block. H G Beach, Regent; H S Bailey, Sec and Coll; H G Beach, treas; Dr A Wilkinson, Medical Examiner.

R. T. OF T.

Goodrich Council, No 17—Organized Nov 24th, 1879. Headquarters, Potter block. A Harshaw, S C; J J Potter, Secretary.

STAGE LINES.

Alpena, Presque Isle and Rogers City. Leaves Exchange hotel every Monday morning. Returning, leaves Rogers City every Tuesday morning. Fare, \$2.

John F. Eby & Co., BOOK and JOB Printers, Detroit

STEAMBOATS—PASSENGER.

(TIMES AND NAMES OF BOATS LIABLE TO ALTERATION.)

City of Alpena—Leaves Detroit at 10 o'clock on Monday nights, and at 9 o'clock on Friday mornings, and arrives at Alpena at 9 o'clock on Tuesday nights, and at 6 o'clock on Saturday mornings. Leaves Alpena for Detroit at 9 o'clock on Wednesday evenings, and at 7.30 o'clock on Sunday mornings.

City of Mackinac—Leaves Detroit at 10 o'clock on Saturday nights, and at 9 o'clock on Wednesday mornings, and arrives at Alpena at 9 o'clock on Sunday evenings, and at 6 o'clock on Thursday mornings. Leaves Alpena for Detroit at 9 o'clock on Tuesday nights, and at 7.30 o'clock on Saturday mornings.

Flora—Leaves Detroit every Tuesday at 9 o'clock P M, and arrives at Alpena at 11 A M every Thursday. On down trip leaves Alpena for Detroit every Saturday at 11 o'clock A M.

Atlantic—Leaves Detroit every Saturday at 9 o'clock P M, and arrives at Alpena every Monday at 7 o'clock A M. Leaves Alpena for Detroit every Wednesday at 10 o'clock A M.

MAIL STEAMERS.

Metropolis—Arrives from and departs for Bay City every Tuesday, Thursday and Saturday morning, leaving at 5.30 o'clock.

Arundel—Arrives from Bay City on Wednesday, Friday and Sunday mornings, and leaves Wednesday, Friday and Monday mornings at 5.30 o'clock.

TELEGRAPH.

Western Union—Office The Churchill. G A Howard manager.

MASON & HAMLIN } **C. L. BABCOCK, Agent,**
Organs and Pianos. } **GLOBE HOTEL BLOCK.**

BEACH & ALGER. Hardware.

ALPENA CITY DIRECTORY.

49

TELEPHONE.

Alpena Exchange, Telephone and Telegraph Construction Co.
I E Clark manager. Office Bostwick blk, cor River and 2d.

UNITED STATES OFFICES.

United States Customs, J E Giroux dep collector, 128 Water.
United States Fish Hatchery, S P Wires foreman, 227 Water.
United States Signal Service, Sergt J J Fitzgerald observer-in-charge, 351 Dock.

MISCELLANEOUS SOCIETIES.

Alpena Bible Society—Depository in Centennial block. E K Potter, Pres; H W Pollard, Vice-Pres; Benjamin Richards, Sec; Adam Ludwig, Treas.

Alpena County Agricultural Society—Organized Sept 14, 1878. N M Breckenridge, Pres; W E Rogers, Sec; John Monaghan, Treas. Fair grounds in second ward.

Alpena Driving Park Association—W L Churchill, Pres; C B Greely, Sec and Treas. Park at Alpena County Agricultural Grounds.

Ancient Order Hibernians—Meets first Sunday of each month in basement St Bernard's Church. John Donovan, Pres; Thomas Foley, Vice-Pres; James Devereaux, Rec Sec; Patrick Foley, Fin Sec.

C M B A—Meets every Thursday evening at 8 o'clock in basement St Bernard's Church. Rev T D Flannery, Spiritual Director; James Whalen, Pres; M O'Brien, Sec; Rev T D Flannery, Treas.

Children of Mary—Meeting fourth Sunday of each month in St Bernard's School.

Field & Gray, Stationery and Wall Paper,
—119 NORTH SECOND STREET.—

C. E. Howes, PAINTER, PAPER HANGER, SIGN PAINTER and GRAINER. 307 W. Chisholm Street.

50

R. L. POLK & CO.'S

Knights of St John—Meets first and third Sundays of each month in National Union Hall. A B Champagne, Commander; Joseph Croteau, Sec and Treas.

Ladies' Aid Society of the First Congregational Church—Meets every Wednesday at 2 P M at the Chapel. Mrs J E Field, Pres.

Ladies' Aid Society of First Methodist Church—Meets each alternate Wednesday at church parlors.

Ladies' Aid Society of Trinity Episcopal Church—Meets every Thursday at 2 P M.

Ladies' Home and Foreign Mission Circle of the First Baptist Church—Meets last Wednesday of each month at the church parlors. Mrs F N Barlow, Pres; Mrs Wm Roberts, Vice-Pres; Mrs H V Holmes, Sec; Miss Eunice A Tenney, Treas.

Longshoremen's Union, No 1—Meets every Wednesday evening at 8 o'clock at their hall, 137 Water. L Hodgins, Pres; John Hart, Rec Sec; Moses Sharp, Fin Sec.

Married Ladies' Altar Society—Meets second Sunday of each month, in basement of St. Bernard's Church.

Missionary Association of Methodist Church (In connection with the Sunday School)—Officers same as school.

Mystic Base Ball Club—Headquarters, Peter E DeWill jr, Water st; C T Parks, Sec and Mngr; Andrew Shefferman, Treas.

St Aloysius' Boys' Total Abstinence Society—Meets first Sunday of each month, in St Aloysius' School.

St Bernard's Church Societies—Under direction of the Sisters of Charity.

St Jean Baptiste Society—Meets second Sunday of each month, in the Council Chamber over No. 1 Engine House; Leon Mayville, Pres; Alexander Daoust, Sec; John Mayville, Treas.

FONTAINE & LALONDE, Mfrs. of and Dealers in **Boots and Shoes**
132 WEST CHISHOLM STREET.

Langworthy & Hiser, VARIETY STORE—
—346 DOCK STREET.—} **Crockery and Glassware.**

ALPENA CITY DIRECTORY.

51

Women's Auxiliary Missionary Society of Trinity Episcopal Church—Meets every month.

Women's Missionary Society of First Congregational Church—Mrs H H Van Auken Pres; Mrs A R Blakely, Treas.

Young Ladies' Sodality—Meets third Sunday of each month in basement of St Bernard's Church.

Saginaw, Bay City & Alpena

LINE OF STEAMERS.

LEAVE ALPENA DAILY AT 5.30 A. M.,

Connecting at BAY CITY same evening with trains for DETROIT, PORT HURON, and all points East and West.

DAILY BOAT (Sundays Excepted) LEAVING BAY CITY

Upon arrival of noon trains from Detroit, Port Huron and Jackson,

—FOR—

Tawas, Oscoda, Greenbush, Harrisville and Alpena,

Connecting at Alpena with Boats for CHEBOYGAN and MACKINAW.

Office and Dock, bet. 4th and 5th Sts.,

BAY CITY, MICH.

ROBERT MAXWELL, Agent. A. R. LEE, Manager.

L. C. Myer, LADIES' INTELLIGENCE OFFICE
203 WEST CHISHOLM STREET.

The Northern Pacific RAILROAD

TO THE WHEAT FIELDS AND FARMING LANDS OF MINNESOTA AND DAKOTA.

TO THE STOCK RANGES AND MINING REGIONS OF MONTANA AND IDAHO.

TO PORTLAND, TACOMA, SEATTLE, VICTORIA AND ALASKA.

The Shortest Line from the East, and the only

THROUGH CAR LINE

to Helena, Butte City, Deer Lodge and all Montana Points.

ONLY DINING CAR LINE TO THE PACIFIC COAST.

ONLY RAIL LINE TO THE YELLOWSTONE NATIONAL PARK.

To Minnesota, Dakota and Manitoba Resorts.

St. Paul or Minneapolis to Glenwood (Lake Minnewaska) and return.....	\$5 25
" " Duluth or Superior to Battle Lake and return.....	7 50
" " " " Detroit Lake and return.....	9 15
" " " " Minnewaukan (Devil's Lake) and return.....	18 65
" " " " Winnipeg, Manitoba, and return.....	22 50

To the Yellowstone National Park.

To Upper Geyser Basin and return.....\$75 00

The above ticket includes rail and stage transportation.

Special book ticket, including complete tour of the Park.....110 00

The above ticket includes rail and stage transportation for entire tour, including Upper and Lower Geyser Basins, Grand Falls, and Canon of the Yellowstone; also includes double berth in Pullman Car St. Paul to Livingston, Mont., and return; meals each way in Northern Pacific Dining Cars, and meals and lodgings for five days at hotels of the Yellowstone Park Association. Tickets good forty days, and allow stop-over privileges.

To Montana and Eastern Washington Points.

The following Round Trip Excursion Rates are in effect from St. Paul, Minneapolis, Duluth or Ashland:

To Livingston, Mont., and return.....	\$50 00
To Bozeman, Mont., and return.....	52 00
To Helena, Mont., and return, via N. P. R. R.....	56 00
To Helena, Mont., and return, going via N. P. R. R., returning via Mont. Cent. and St. Paul, Minneapolis & Manitoba Rys.....	75 00
To Butte, Mont., and return, via N. P. R. R.....	56 00
To Butte, Mont., and return, going via N. P. R. R., returning via U. Pac. Ry to Missouri River	75 00
To Spokane Falls, Washington Territory, and return.....	70 00

To the Pacific Coast and Alaska.

To Portland, Ore., and return. Tickets good six months.....	\$80 00
To Tacoma, W. T., " " " ".....	80 00
To Victoria, B. C., " " " ".....	80 00
To Sitka, Alaska, " " " ".....	175 00

Portland Excursion Tickets good to return via San Francisco to Kansas City, Council Bluffs, Houston, Minneola and other points, on payment of \$15 additional at St. Paul, Minneapolis, Duluth or Ashland.

Stop-overs allowed on above tickets.

Special book tickets on sale at Livingston, Mont., permitting side-trip through Yellowstone Park, including rail and stage transportation, meals and lodgings:

One day, \$10.00; 3 days, \$30.00; and 5 days, including complete tour, \$40.00.

The equipment of the Northern Pacific is first-class in every respect. Its Coaches, Second-class and Colonist Sleeping Cars are the best of the kind, its Pullman Sleepers are unequalled for elegance and comfort, and its Dining Car appointments, service, and fare unsurpassed. Hand-somely illustrated publications descriptive of the Line and contiguous country, giving full information to the Tourist and General Traveler, sent free on application to the undersigned. Among the publications are the following:

"Through Wonderland;" "Alice's Adventures in Wonderland;" Proctor Knott's Famous "Duluth Speech," illustrated; "Northern Pacific Excursions;" Northern Pacific Manual, Folders, Maps, Etc.

CHAS. S. FEE,
G. P. & T. A., N. P. R. R.,
ST. PAUL, MINN.

OWEN FOX, MASON AND BUILDER,

DEALER IN

Stone, Lime, Hair, Plaster

AND ALL KINDS OF

BUILDING MATERIAL.

ESTIMATES FURNISHED FOR ALL KINDS OF BUILDINGS

OFFICE, FOOT OF CHISHOLM STREET,

ALPENA, - - - MICHIGAN.

LEWIS T. KLINE.

JAMES F. NICHOLSON.

Alpena Industrial Works, IRON & BRASS FOUNDERS AND MACHINISTS.

HEAVY AND FINE BLACKSMITHING.

MANUFACTURERS OF AND DEALERS IN

Engines and Boilers,

Saw and Shingle Mill Machinery,

Kline's Steam Feed Valves,

Agricultural Implements,

Bar Iron and Steel,

Iron and Brass Castings.

FOUNDRY:

126-128 W. River St.,

ALPENA, MICH.

TELEPHONE 32.



CHARLES LEAVITT.

JOHN MCPHEE.

LEAVITT & MCPHEE,**Livery and Sale Stable**

Orders filled immediately for all kinds of Conveyances.

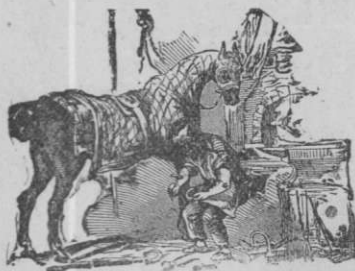
Everything New and First class.

Proprietors Alpena & Hillman Stage, leaving Tuesdays, Thursdays and Saturdays at 8 A. M.

117 W. Chisholm St., between 2d & 3d Sts., ALPENA, MICH.

KNEESHAW & GRACE BROS.

MANUFACTURERS OF

CARRIAGES,**WAGONS, CUTTERS, SLEIGHS**

AND LUMBERMEN'S SUPPLIES.

Horseshoers and General Blacksmiths.

Strict Attention paid to Flat-footed and Interfering Horses.

CANT HOOKS AND PEAVIES A SPECIALTY.

231 & 233 E. Chisholm Street, - ALPENA, MICH.

R. B. SCOTT,

DEALER IN

Wines, Liquors & Cigars.

BOTTLER OF THE

**TOLEDO BREWING & MALTING CO.'S
CELEBRATED LAGER BEER.**

BILLIARD HALL IN CONNECTION.

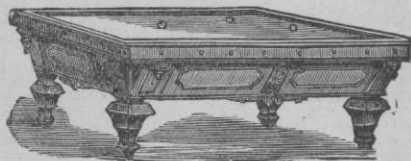
DEALER IN

Mineral Waters, Ginger Ale, Cider and all Carbonated Drinks.

117 and 119 East Chisholm Street,

**ALPENA,
MICH.**

Telephone No. 44.

**ALPENA HOUSE****TRUMAN SMITH, Proprietor.**

Cor. Chisholm and Fourth Streets.

Centrally located, though removed from the heat of saw-dust burners and the noise of mills.

FIRST-CLASS IN ITS APPOINTMENTS!**LIBERAL IN ITS ARRANGEMENTS!**Conceded by all, Commercial Travelers Especially,
to be one of**The BEST HOTELS in ALPENA.**THE TABLE IS UNSURPASSED BY THAT OF ANY
HOTEL ON THE SHORE.**FREE 'BUS TO RAILROAD DEPOT AND STEAMBOAT
LANDINGS.**

JAMES E. DENTON

Furniture and Undertaking,
FUNERAL DIRECTOR and EMBALMER

DEALER IN
 Parlor, Office and Chamber
 Furniture,

102 N. 2d Street.

Livery and Sale Stable

114 & 116 E. RIVER ST.

GOOD RIGS AT LOW PRICES.

COMMERCIAL TRADE SOLICITED

AND

Satisfaction Guaranteed.

**A. R. BLAKLEY,****Real Estate and Farming Lands**

CITY LOTS FOR SALE.

THE PAYING OF TAXES FOR OUTSIDE PARTIES A SPECIALTY.

CENTENNIAL BLOCK, - - ALPENA, MICH.

HENRY CLOTHIER,

Attorney-at-Law and Circuit Court Commissioner.

JUSTICE OF THE PEACE.

Special Attention Given to Collections, Payment of Taxes
 for Non-Residents, Etc.

COMSTOCK BLOCK, - - ALPENA, MICH.

GEO. PAMERLEAU,

DEALER IN

GROCERIES and PROVISIONS

Flour, Feed, Hay, Grain, Family Produce, Etc.

310 West Chisholm Street,

ALPENA, - - - MICHIGAN.

JAMES HELPES,

Wagonmaker, Blacksmith and Horseshoer



Also, GENERAL REPAIR SHOP.

All orders will receive prompt attention. All kinds of repairing done on short notice.
 Shop, 206 West Fletcher Street, **ALPENA, MICHIGAN.**



WM. OLDENBURG,

DEALER IN CHOICE

Wines, Liquors and Cigars

211 North 2d Street,

ALPENA, - MICH.

ALPENA MARBLE WORKS.

A. B. CROW, Proprietor.



Dealer in Foreign and Domestic
MARBLE,
MONUMENTS,
HEADSTONES,
 Marble and Slate Mantels.
 CUT STONE FOR BUILDING.
 Foot Chisholm Street,
 ALPENA, MICH.

KRIMMER & HARTWIG,

DEALERS IN

FRESH, SALT AND SMOKED

MEATS,

POULTRY,

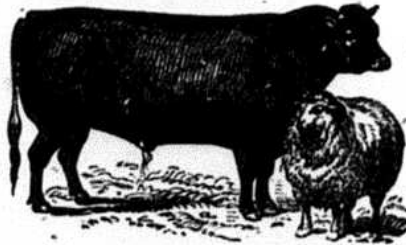
BUTTER, EGGS, LARD, Etc.,

223 N. Second St.,

2 Doors from the Bridge,

ALPENA,

MICHIGAN.



WM. F. WOELK,

DEALER IN

FRESH AND SALT

MEATS,

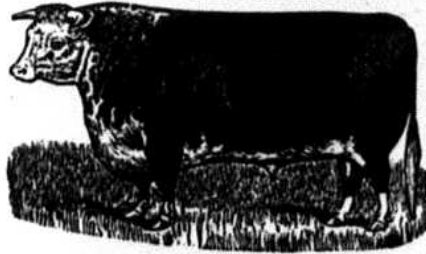
Butter, Eggs, Lard,

HIDES, Etc.

107 & 109 E. River Street,

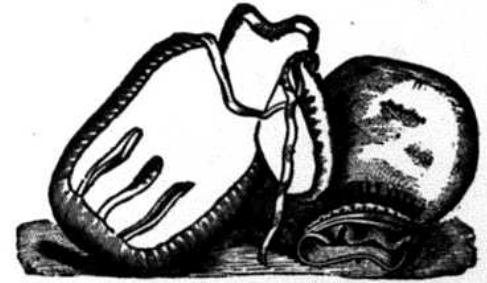
ALPENA.

MICHIGAN.



M. E. CASEY, SAMPLE ROOM.

Sportsmen's Headquarters.
 CHOICE BRANDS OF WINES,
 LIQUORS AND CIGARS.
IMPORTED LAGER BEER
 ON DRAUGHT.
 Water Street, foot of First Street,
 ALPENA, MICH.



RUDOLPH KUNATH.

AUGUST GUENTHER.



KUNATH & GUENTHER,
 MANUFACTURERS OF
FINE HAVANA CIGARS.

Specialty, "R. K." and "EL NOBLE."

123 West Chisholm Street,

ALPENA, MICH.

JAMES S. ANDERSON,

DEALER IN

WINES, LIQUORS

AND

Imported and Domestic Cigars.

101 WATER STREET, COR. 2d STREET,

ALPENA, MICH.



WM. McMASTER,

Manufacturer of and Dealer in all kinds of

Harness, Collars, Bridles, Whips

AND HORSE GOODS GENERALLY.

Repairing Promptly and Carefully Done.

Agency for the Great German Harness Oils, and First Prize Carriage Top Dressing, the Best of any on Earth.

119 West River Street,

ALPENA, MICH.