

Police Department

Grand Trunk Railway System.

FAST TRAIN SERVICE

Detroit, Saginaw Valley and all points in Michigan,

WITH ASSURED CONNECTIONS TO ALL PRINCIPAL POINTS

East, New England States and Canada.

THROUGH PULLMAN SLEEPERS

To Buffalo, New York, Boston, Toronto, Montreal and Portland.

INFORMATION CAN BE HAD FROM ALL AGENTS.

Police Department

14TH YEAR OF PUBLICATION.

R. L. POLK & Co.'s Medical and Surgical Register

OF THE UNITED STATES AND CANADA.

Sixth revised edition to appear in 1900 will contain the names and addresses of over 130,000 PHYSICIANS, OVER 1,500 HOSPITALS, ASYLUMS and SANITARIUMS, a list of all MEDICAL COLLEGES in the United States and Canada, a synopsis of the LAWS for regulating the practice of medicine, the GRADUATION PARTICULARS of each physician, and the SCHOOL PRACTICED, and will include a vast amount of other information of special interest to the medical profession, calculated to insure for it a large and general circulation throughout the whole country.

Police Department R. L. POLK & CO.

POLK'S
ALPENA
CITY
AND
COUNTY
DIRECTOR
1900-1900

Police Department

F. W. GILCHRIST, President. W. H. JOHNSON, Vice President.
JOHN C. COMFORT, Cashier.

Alpena National Bank,

ALPENA, MICHIGAN.

CAPITAL \$50,000. SURPLUS, \$15,500

DIRECTORS:—F. W. Gilchrist, W. H. Johnson, Henry Bolton, John C. Comfort, W. B. Taber, John Sinclair, V. M. Kreba.

CORRESPONDENTS:—American Exchange National Bank, Detroit; Bank of New York, N. B. A., New York; First National Bank, Bay City.

Drafts drawn on all parts of Europe. Special attention to Collections.

BECK MALTING AND BREWING CO.

MANUFACTURERS AND BOTTLERS OF

Silver

Foam



Lager

Beer.

BOHEMIAN EXPORT

AND PORTER.

Also Manufacturers of Ginger Ale, Sherbet, Birch Beer, Pepp and Other Carbonated Drinks.

Office and Brewery, West Side First Street, between Washington Ave. and East River.
ALPENA, MICHIGAN.

E. H. FURBUSH,



Omnibus, Baggage and Freight Transfer Line.

Office and Baggage to and from all Boats and Trains.
OFFICE, STATE ST., ALPENA, MICH.
Tel. Bell, 135. Tel. Mutual, 32.

The Alpena National Bank

CALLS YOUR ATTENTION TO

The Savings Department.

DEPOSITS OF \$1.00 AND UPWARDS
RECEIVED.

INTEREST PAID SEMI-ANNUALLY.

CALL AND SEE US.

A. W. ZIEM,

BEER HALL

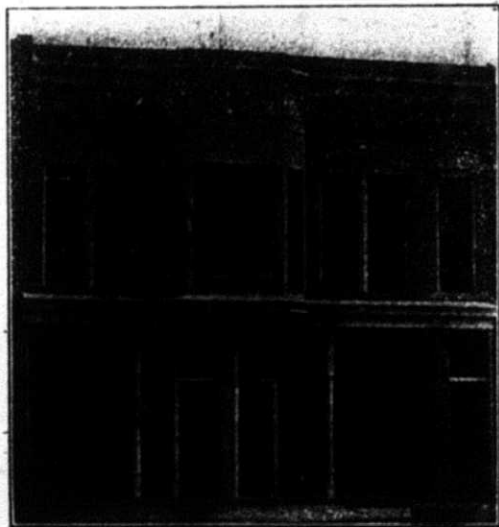
The Finest Brands of
Whiskies,
Wines and
Cigars.

Newly Fitted
and Furnished
Throughout.

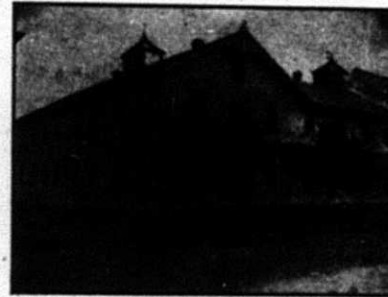
111 & 113 W. River St.

ALPENA, MICH.

Also Shingle Mfr. and
Real Estate Dealer.



THE ALPENA HOSPITAL AND SANATORIUM



This large and commodious establishment is located in the very center of the City of Alpena, and was erected for the accommodation of the traveling tourists, as well as for the sick and convalescent, and fills a long felt want, which heretofore was a drawback in making Alpena the very finest Summer Resort in the State of Michigan.

It is incorporated under the law of the State of Michigan, and is styled as the Lafayette Medical and Training School for Nurses. When fully completed, the Hospital will be separate from the Sanatorium, and will be equipped with the most modern improvements.

Every pains has been taken in selecting a physician of renown, and everybody will know that in selecting the present incumbent, Dr. A. E. Bonneville, we have put at the head for its management, one who has a national reputation, and has already gained an envious reputation in this very city.

The hospital is provided with a corps of trained nurses, and everything will be done to comfort the sick, and the method of treatment is all that medical and surgical science can afford.

DR. J. B. NELLESSEN, Secretary.

THE CLUB

... FINE OLD ...

WINES AND LIQUORS,

ALSO ALL THE
LEADING BRANDS OF CIGARS

CAFE IN CONNECTION.

GUS NOE, PROPRIETOR.

111 W. River St., ALPENA, MICH.



THE HOLMES & KELSEY CO.

...WHOLESALE...

GROCERS AND IMPORTERS.

Jobbers of

Teas, Coffees, Syrups, Spices, Etc.

And Distributors of

GOLD MEDAL FLOUR.

353 Dock St. and 108 and 110 Fletcher St., ALPENA, MICH.

GLOBE HOTEL.

M. FITZPATRICK, PROPRIETOR.

RATES PER DAY, \$1.00 AND \$1.50.

Cor. Washington Ave. and Second St., ALPENA, MICH.

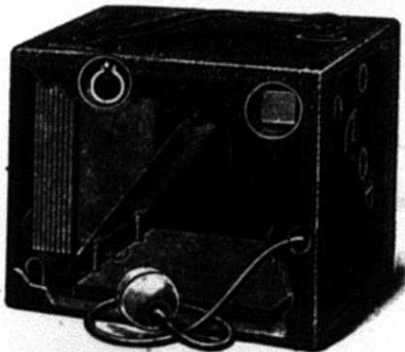
NEWLY DECORATED, STEAM HEAT, ELECTRIC LIGHTS AND
ALL MODERN CONVENIENCES.

Close to the Detroit & Cleveland Navigation Co.'s Wharf, and a Short Distance from the D. & M. Railway Depot.

Table Supplied with All the Season Affords.
Good Sample Rooms for Commercial Men.
Special Rates for the Theatrical Profession.
Within Two Blocks of Opera House.

Finest Line of Foreign and Domestic Wines, Liquors and Cigars. Both Telephones.

C. H. REYNOLDS,



CYCLONE CAMERA.

**Jewelry, Watches,
Clocks and Spectacles**

ALSO AGENT FOR THE

Celebrated "Cyclone Camera"

This is the Only Box Camera
with a Bulb Attachment.

117 N. 2d, ALPENA.

The Alpena Industrial Works,

FOUNDRY, MACHINE & BLACKSMITH SHOP.

LEWIS T. KLINE,
Mechanical Engineer and Proprietor,

MANUFACTURER OF

Saw and Shingle Mill Machinery,

Engines, Steam Hammers,

Steam Feed Valves, Baling Presses,

Horse Powers, Drag Saws,

Knife Grinders,

Automatic Off-Set for Saw Mill Carriage,

Automatic Machinery for Turning Spools, Bobbins, Corks,

Boxes, etc., and for Manufacturing Excelsior.

DEALER IN MILL AND ENGINEERS' SUPPLIES.

Office and Shop on River, Between Second and Third Streets. ALPENA, MICH.

Boston Restaurant,

JOHN J. STOLL, Proprietor.

Warm Meals at All Hours,

COLD LUNCHES.

Also a Full Line of Choice Confections.

OYSTERS IN SEASON.

116 South Second St., opp. Masonic Temple, - ALPENA, MICH.

MICHAEL O'BRIEN.

JAMES FRANCIS.

O'BRIEN & FRANCIS,

Attorneys and Counselors-at-Law.

GENERAL PRACTICE.

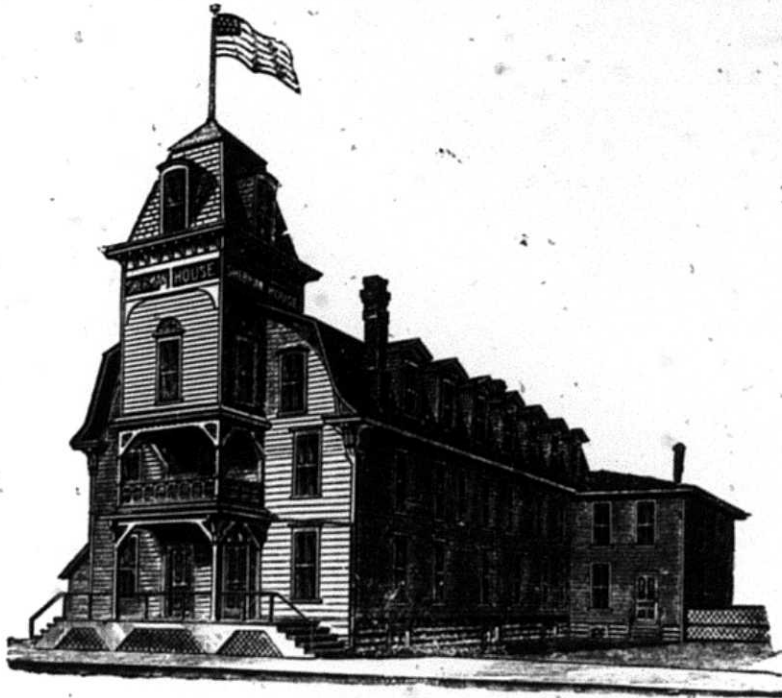
Collections given Prompt and Careful Attention. General Dealers in Real Estate. Surety Bonds and Fire Insurance.

COMSTOCK BLOCK, - ALPENA, MICH.

SHERMAN HOUSE

JOHN D. McDONALD, Propr.

217 West Fletcher St., opp Depot, ALPENA, MICHIGAN.



RATES. REASONABLE.

This House Has Lately Been Refitted and
Furnished Throughout.

GOOD ACCOMMODATIONS.

GOOD STABLE IN CONNECTION.

EVERY ATTENTION PAID TO THE COMFORT OF GUESTS.

ARCHIE McINNIS, CARRIAGES, WAGONS, CUTTERS, SLEIGHS, &c.



BLACKSMITHING IN ALL ITS BRANCHES.

Horseshoeing. Repairing Done at the Shortest Notice.

SATISFACTION TO ALL CUSTOMERS GUARANTEED.

112 South Third Street, ALPENA, MICH.

THE FREER PAINT HAND MIXED AND WATERPROOF.

A NEW DISCOVERY.

ALPENA PAINT CO., 123 W. River Street, ALPENA, MICH.

TO USERS OF PAINT.

Having used nearly all kinds of paints on my vessel for the past twenty years, last spring I had my captain use the **Freer Paint**. I can cheerfully recommend this paint as the best I have ever used on vessels, and the only paint that does not blister or crack, and it wears better than any that I have heretofore used.
ALPENA, MICH., September 14, 1899. JOHN MUELLERWEISS, JR.



**A. W. VENNERS,
Photographer.**

PORTRAITS IN OIL, WATER COLOR,
CRAYON AND PASTEL.

Children's Pictures a Specialty.

Studio, 330 Dock Street, next to Bridge,

ALPENA, MICH.



EDDY BROTHERS,

CONTRACTORS AND JOBBERS IN

Sanitary Plumbing

STEAM, HOT WATER AND HOT AIR
HEATING.

We direct attention to our ability for designing and Furnishing most complete arrangement for installation of our work in public and private buildings.

We solicit an opportunity to figure with you, and on application will cheerfully furnish designs and estimates for work in this line.

ALPENA, - MICH.

F. W. HAGEN,

Agent



AND ALL KINDS OF

SPORTSMEN'S
GOODS.

And Dealer in **HARDWARE**, Stoves and Tinware, Sash, Doors, Glass, Paints, Oils, etc. All kinds of Farm Implements. Also Sole Agent E. Bement & Sons' Stoves and Ranges.

410-412 Dock St., Owen's Block, ALPENA, MICH.

Alpena Lime Works and Stone Quarry,

R. COLLINS, Propri.,

DEALER IN

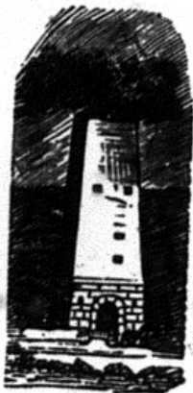
BUILDING STONE,

Brick, Water Lime, Cement, Plaster

And All Kinds of BUILDING MATERIAL.

Estimates Furnished for Building and Plastering at Lowest Rates.

151 Water Street, ALPENA, MICH.



17TH YEAR.

POLK'S ALPENA

CITY AND COUNTY

DIRECTORY

1899-1900.

COMPRISING

AN ALPHABETICALLY ARRANGED LIST OF BUSINESS FIRMS AND PRIVATE CITIZENS; A FARMERS' DIRECTORY OF EACH TOWNSHIP IN ALPENA COUNTY. ALPHABETICALLY ARRANGED: A CLASSIFIED LIST OF ALL TRADES, PROFESSIONS AND PURSUITS—A MISCELLANEOUS DIRECTORY OF CITY AND COUNTY OFFICERS, TERMS OF COURT, STREETS AND AVENUES, PUBLIC BUILDINGS, SCHOOLS, CHURCHES, BANKS, SECRET AND BENEVOLENT SOCIETIES, ETC.

SOLD ONLY BY SUBSCRIPTION.

R. L. POLK & CO., PUBLISHERS,



68-72 GRISWOLD STREET, DETROIT, MICH.

For List of Publications see inside back cover.

Entered according to Act of Congress in the year 1899, by R. L. POLK & CO., in the Office of the Librarian of Congress, at Washington, D. C.

INTRODUCTORY.

This is the 17th year of publication of the Alpena City and County Directory and it is introduced as being as complete and accurate as its worthy predecessors, it being the constant aim of the publishers steadily to improve in accuracy, fullness of information and convenience for use the contents of each edition. The business directory, the gazetteer of churches, secret, benevolent and social organizations, of all manner of societies, the list of State, county and municipal officers and boards, the list of streets, ward boundaries, etc., etc., in fact, all the varied information desirable in a modern, first-class directory, is given with special accuracy and will, we believe, prove an almost infallible guide to those who use it.

The work contains 312 pages, of which the first 44 are devoted to the miscellaneous information department. Pages 45 to 218 contain an alphabetically arranged list of business firms and private citizens in Alpena, followed by a Classified Business Directory, comprising a list of all persons engaged in business, grouped under their respective callings. This is supplemented by 45 pages giving name, section, number of acres, assessed value of same, township and postoffice-address of all farmers in Alpena County. So far as could be procured, the names and present address of persons who have removed from the city since the last issue, as also the full name, age and date of demise of those who have died within that time are given in the general alphabetical directory.

In due time the eighth volume of the Directory will be issued, and every effort made to make it a complete epitome of the business interests of the city and county.

GENERAL INDEX.

	Page
Abbreviations	45
Alphabetical List of Names.....	45-218
Bands	29-30
Banks	30
Board of Education.....	23
Board of Equalization.....	24
Board of Health.....	24
Board of Police Commissioners.....	25
Building and Loan Associations.....	30
Cemeteries	30
Churches	30-32
City Government	22
Classified Business Directory.....	219-264
Congressional Representatives	29
Constables	24
Convents and Private Schools.....	32
County Officers	26
Courts	26-29
Electric Light Plants	32
Farmers' Directory	265-309
Fire Department	25-26
Justices of the Peace.....	27-28
Labor Unions	43-44
Libraries	33
Military	33
Miscellaneous Information	13-44
Miscellaneous Societies	33-44
Newspapers	35
Police Department	25
Postoffice	35-36
Postoffices in Alpena County.....	36
Public Halls, etc.....	36-38
Railroads	38
Schools—Private	32
Schools—Public	38
Secret and Benevolent Societies.....	39-43
State Government	28-29
Steamboat Lines	44
Streets and Avenues.....	13-20
Supreme Court	29
Township Officers	27-28
United States Officers.....	44
Ward Boundaries	20-22
Water Works	44

INDEX TO ADVERTISEMENTS.

	Page
Alpena Evening News.....	left top lines
Alpena Hospital and Sanitarium.....	3
Alpena Industrial Works	5
Alpena Lime Works	8
Alpena Mattress Works.....	left bottom lines
Alpena National Bank.....	front cover and 2
Alpena Paint Co.....	7
Beach Harlow G.....	right top lines
Beck Malting and Brewing Co.....	front cover
Bonneville A E.....	3
Boston Restaurant The.....	left top lines and 5
Burton Gideon	47
Campbell Wm H.....	right top lines
Chicago, Milwaukee & St Paul Ry, Chicago, Ill.....	right bottom lines and back fly leaf
Colbath George R.....	left top lines
Collins Richard	8
Dobson W B.....	left top lines
Eddy Brothers	8
Field James E & Co.....	left bottom lines
Fitzpatrick Michael C.....	4
Forest Fred	47
Fox Owen	47
Freer S A.....	7
Furbush E H.....	front cover
Grand Trunk Ry System, Chicago, Ill.....	right and left bottom lines and opp inside back cover
Hagen Fred W.....	left bottom lines and 8
Holmes & Kelsey Co.....	left top lines and 4
Kline Lewis T.....	5
McDonald John D.....	6
McInnis Archie.....	right top lines and 7
McLean & Mills.....	left bottom lines
McLearn Andrew M.....	47
Meers Edward S.....	left top lines
Michigan Laundry.....	right top lines
Missouri Pacific Ry, Chicago, Ill.....	right and left bottom lines
Noe Gustav	3
O'Brien & Francis.....	5
Partridge O L.....	right top lines
Polk R L & Co, Detroit, Mich.....	inside back cover
Prince & Buck.....	right top lines
Reynolds C H.....	right and left top lines and 4
Rogers W E.....	right bottom lines
Stoll J J.....	left top lines and 5
Venners Arthur W.....	right top lines and 7
Ziem Arthur W.....	2

R. L. POLK & CO.'S

ALPENA CITY DIRECTORY

1899-1900.

MISCELLANEOUS DEPARTMENT.

STREETS AND AVENUES.

EXPLANATION.

Chisholm and Dock streets is the dividing line for all streets crossing them, or running North and South, and Second street for all streets running East and West. The system adopted is the same as used in Philadelphia and other large cities, known as the "decimal" system—one hundred numbers being allowed for each block. In cases where vacant lots, etc., occur, the usual numbers have been allotted them. On referring to the following guide, it will be noticed that the names of all streets and avenues follow each other in strictly alphabetical order without regard to location:

Adams, from Long Lake av east to Huron, between Bolton and Monroe.

Addison, from Ontario east to city limits, 1 west of Franklin.

Albert, from Taylor north, between Beebe and Huron.

Alfred East, from Dock east to Mill, 1 north of Beebe.

Alfred West, from Dock west to Huron, 1 north of Beebe.

Ash, from Oliver west to Garden, 2 south of 3d.

Bagley, from Washington av south to 3d, 4 west of Garden.

Baldwin East, from 2d east to State, 1 south of Campbell.

Baldwin West, from 2d west, 1 south of Campbell.

Geo. R. Colbath, FOR FIRST-CLASS **PIANOS & ORGANS.**
 The Reliable Music Dealer, 309 and 311 W. Chisholm St.

14

R. L. POLK & CO.'S

Barry, from city limits and Thunder Bay shore, northwest to 1st, between Mason and Parson.
 Bay av, from E Bingham along Thunder Bay shore, s two blocks.
 Beebe East, from Dock east to Mill, 1 north of Norwegian.
 Beebe North, from Taylor north, between Dawson and Albert.
 Beebe West, from Dock west, 1 north of Norwegian.
 Beech, from Fletcher north to Long Lake av, 5 west of Dock.
 Begole, from Washington av south to 3d, 1 west of Garden.
 Bingham East, from 2d east, 1 south of Wisner.
 Bingham West, from 2d west, 1 south of Wisner.
 Birch East, from Dock east to Trowbridge road, 1 north of Hueber.
 Birch West, from Dock west, 1 north of Hueber.
 Bismarck, from 3d west to Potter, between Lincoln and Campbell.
 Blair East, from 2d east, between Crapo and Wisner.
 Blair West, from 2d west, between Crapo and Wisner.
 Bolton, from Long Lake av east to Huron, between Adams and Owen.
 Bosley East, from Dock east, 1 north of Alfred.
 Bosley West, from Dock west, 1 north of Alfred.
 Bradford, from 10th west, 9 south of Chisholm.
 Bridge, from Richardson's mill northwest, 7 northwest of Dock.
 Broadwell, from Thunder Bay shore northwest, 2 north of Hueber.
 Brook, from Ontario south to city limits, 3 west of Franklin.
 Campbell East, from 2d east to State, 1 south of Lincoln.
 Campbell West, from 2d west to Washington av, 1 south of Lincoln.
 Campbell Track, from Potter & Son's mill southeast to Thunder Bay, between Campbell and Baldwin.
 Catherine, from south end of 8th west, 1 north of Washington av.
 Cavanaugh, from Washington av northwest to 11th, 1 south of Tuttle.
 Cedar, from Fletcher northeast to Long Lake av, between Pine and Beech.

SLEEPWELL MATTRESSES made to fit any bed.
 Alpena Mattress Works.

O. L. Partridge, Real Estate Agent,
Johnrowe Block,
 106-108 N. 2d.

ALPENA CITY DIRECTORY.

15

Charlotte, from Washington av north to 11th, 1 west of Miller.
 Cheboygan, from Lake northeast, between Presque Isle and Mackinaw.
 Chisholm East, from 2d east to water front, 2 south of the bridge, the dividing line of the city north and south.
 Chisholm West, from 2d west to city limits, 2 south of the bridge, the dividing line of the city north and south.
 Clark East, from Dock east to Mills, between Lake and Norwegian.
 Clark West, from Dock west to Taylor, between Lake and Norwegian.
 Clinton, from Baldwin southwest to city limits, between State and 1st.
 Collins, from mill pond north to city limits, 3 west of Woodward av.
 Commercial, from Fletcher northeast to Taylor, between Pine and Merchant.
 Cottage, from Johnson north to city limits, 1 west of Woodward av.
 Crapo East, from 2d east to State, 1 south of Baldwin.
 Crapo West, from 2d west to 3d, 1 south of Baldwin.
 Dawson, from Taylor north to Owen, between Long Lake av and Beebe.
 Dock, continuation of 2d from Thunder Bay river northeast to city limits, the dividing line of the city north and south.
 Dunbar East, from 2d east to State, 1 south of White.
 Dunbar West, from 2d west to 4th, 1 south of White.
 Eighth North, from Chisholm north to the river, 6 west of 2d.
 Eighth South, from Chisholm south to Washington av, 6 west of 2d.
 Eleventh North, from Chisholm north to Oak, 9 west of 2d.
 Eleventh South, from Chisholm south to the river, 9 west of 2d.
 Elizabeth, from Cavanaugh west to Potter's mill, 2 north of Washington av.
 Elm, from Sherman av west to Collins, 1 north of mill pond.
 Emmet, from Oliver west to Garden, 1 south of 3d.
 Erie, from R R track west, 4 south of Washington av.

Take the TOLEDO, ST. LOUIS & KANSAS CITY R. R.
 For St. Louis, Memphis and the Southwest.

Fair av, from 6th northwest to 12th, between Plains and Tuttle.
Felch, from Washington av south to 3d, 3 west of Garden.
Fifth North, from Chisholm, north to River, 3 west of 2d.
Fifth South, from Chisholm south to city limits, 3 west of 2d.
First North, from Chisholm north to the river, between 2d and State.
First South, from Chisholm south to city limits, between 2d and State.
Fletcher East, from Dock east to Gilchrist's mill, first north of the river.
Fletcher West, from Dock west to Beech, first north of the river.
Florence, from Sherman av west to Collins, 2 north of mill pond.
Flower av, from Palm north to Johnson, between Logan and Sherman avs.
Forest av, from Woodward av west to Collins, 6 north of mill pond.
Fort, from mill pond north to city limits, 2 west of Woodward av.
Fourteenth, from Chisholm north to mill pond, 12 west of 2d.
Fourth North, from Chisholm north to River, 2 west of 2d.
Fourth South, from Chisholm south to city limits, 2 west of 2d.
Franklin, from Washington av south to city limits, 1 west of North.
Frederick av, from Oliver west to Garden, 1 south of 1st.
Garden, from Washington av south to city limits, 5 west of Franklin.
Grant av, from Oliver west to Garden, 3 south of 1st.
Herman East, from Dock east, 1 north of Birch.
Herman West, from Dock west, 1 north of Birch.
Hitchcock, from 2d east, 1 north of White.
Hueber East, from Dock east to Trowbridge road, between Bosley and Birch.
Hueber West, from Dock west, between Bosley and Birch.
Huron, from Taylor north, 1 east of Albert.
Jefferson, from Ontario south to city limits, 4 west of Franklin.

Johnson, from Sherman av west to Chisholm, 3 north of mill pond.
La Forest av, from Oliver west to Garden, 2 south of 1st.
Lake East, from Dock east to Mill, between Miller and Clark.
Lake West, from Dock west to city limits, between Miller and Clark.
Lawn, from Ontario south to city limits, 2 west of Franklin.
Lewis East, from 2d east to 1st, between Dunbar and Maple.
Lewis West, from 2d west to Washington av, between Dunbar and Maple.
Lincoln East, from 2d east to 1st, 1 south of Mirre.
Lincoln West, from 2d west to Potter, 1 south of Mirre.
Lockwood, from 2d and Washington av northwest to 14th, 1 south of Chisholm.
Logan av, from mill pond north to Johnson, 1 west of Flower avenue.
Long Lake av, from Miller north to city limits, 3 east of Fletcher.
Mackinaw, from Lake northeast, 12 west of Dock.
Maltz, from 12th northwest, north of old Catholic cemetery.
Maple East, from 2d east to 1st, between Lewis and Mirre.
Maple West, from 2d west to 5th, between Lewis and Mirre.
Mason, from State and city limits west to 1st, 11 south of Barry.
Merchant, from Fletcher northeast, between Dock and Commercial.
Michigan, from Garden west to city limits, 1 s of Washington av.
Mill, from Fletcher northeast to Trowbridge rd, 1 southeast of Dock.
Miller, changed to Ripley.
Miller East, from Dock east to Mill, between Oldfield and Lake.
Miller West, from Dock west to Bridge, between Oldfield and Lake.
Minor, from 9th northwest to 14th, 2 northeast of Chisholm.
Minor alley, from 10th west to 11th, between River and Minor.
Mirre East, from 2d east to 1st, between Maple and Lincoln.
Mirre West, from 2d west to Washington av, between Maple and Lincoln.

Subscribe for **The Evening News.**
It is up-to-date. Only one cent a day.

18

R. L. POLK & CO.'S

Monroe, from Long Lake av east to Huron, between Taylor and Adams.
Ninth North, from Chisholm north to the river, 7 west of 2d.
Ninth South, from Chisholm south to Park, 7 west of 2d.
North, from Ontario south to city limits, 1 east of Franklin.
Norwegian East, from Dock east to Mill, between Clark and Beebe.
Norwegian West, from Dock west to Commercial, between Clark and Beebe.
Oak, from 10th northwest to 11th, between Minor and the river.
Oldfield East, from Dock east to Mill, between Fletcher and Miller.
Oldfield West, from Dock west, between Fletcher and Miller.
Oliver, from Lake northeast, between Pond and Presque Isle.
Oliver, from Third south of city limits, 3 east of Franklin.
Ontario, from R R track west to city limits, 3 south of Washington av.
Owen, from Long Lake av east, 1 north of Bolton.
Oxford, from Woodward av west, to Chisholm, 4 north of mill pond.
Palm, from mill pond east to Sherman av, 1 south of Elm Park, from Elizabeth northwest, 1 north of Charlotte.
Parson East, from 2d east to State, between Bingham and Barry.
Parsons West, from 2d west to city limits, between Bingham and Barry.
Pierce, from Woodward av west to Chisholm, 5 north of mill pond.
Pine, from Fletcher northeast to Lake, between Commercial and Cedar.
Plains, from Washington av northwest to 11th, between Saginaw and Fair av.
Pond, from Lake northeast, between Bridge and Oliver.
Potter, from Campbell northeast to Washington av, 2 east of D & M Ry.
Prentiss, from State east to shore of Thunder Bay,, 1 south of Chisholm.
Presque Isle, from Lake northeast, between Oliver and Cheboygan.

GRAND TRUNK RAILWAY SYSTEM For Niagara Falls, Toronto, Montreal, Canada, Portland and the East.

Archie McInnis, Blacksmithing
IN ALL ITS BRANCHES.
112 South Third St.

ALPENA CITY DIRECTORY.

19

Railroad, from Campbell Track northeast, parallel with State.
Rich, from Washington av south to 3d, 2 west of Garden.
Richardson, a continuation of Lewis, from 1st southwest to State, 1 south of Dunbar.
Ripley, from Campbell north to Washington av, 1 west of Potter.
River East, from 2d east to water front, 1 north of Chisholm.
River West, from 2d west to 14th, 1 north of Chisholm.
Sable, from Washington av northwest to 12th, 2 south of Chisholm.
Saginaw, from 4th northwest to 11th, between Tawas and Plains.
Second North, from Chisholm north to the river, between 1st and 3d.
Second South, from Chisholm south to city limits, between 1st and 3d.
Seventh North, from Chisholm north to river, 5 west of 2d.
Seventh South, from Chisholm south to Tuttle, 5 west of 2d.
Sheridan, from 3d south to city limits, 2 east of Franklin.
Sherman av, from Palm north to Johnson, 1 east of Flower avenue.
Sixth North, from Chisholm north to W River, 4 west of 2d.
Sixth South, from Chisholm south to Washington av, 4 west of 2d.
State, from Chisholm southwest to city limits, parallel with Thunder Bay shore.
Superior, from Garden west to city limits, 2 s of Washington av.
Tawas, from Washington av near 3d, northwest to 12th, between Sable and Saginaw.
Taylor, from Long Lake av east to Huron, 1 south of Monroe.
Tenth North, from Chisholm north to the river, 8 west of 2d.
Tenth South, from Chisholm south to city limits, 8 west of 2d.
Third North, from Chisholm north to river, 1 west of 2d.
Third South, from Chisholm south to city limits, 1 west of 2d.

CHICAGO, MILWAUKEE & ST. PAUL RY.
Best Road between Chicago and the West and North-
west. Solid Vestibule Compartment Car Trains.

- Thirteenth North, from Chisholm north to Minor, 11 west of 2d.
- Thirteenth South, from Chisholm south to Lockwood, 11 west of 2d.
- Trowbridge Road, from cor Mill and Bosley, northeast to city limits.
- Tuttle, from Washington av northwest to 11th, between Farmer and Cavanaugh.
- Twelfth North, from Chisholm north to Minor, 10 west of 2d.
- Twelfth South, from Chisholm south to Tawas, 10 west of 2d.
- Vine, from R R track west, 5 south of Washington av.
- Walnut, from Oldfield northeast to Long Lake av, between Beech and Bridge.
- Washington av East, east from S 2d to Chisholm.
- Washington av West, west from S 2d to city limits.
- Water, from 2d east to Thunder Bay shore, 2 north of Chisholm.
- White East, from 2d east to 1st, between Hitchcock and Dunbar.
- White West, from 2d west to 3d, between Hitchcock and Dunbar.
- Wisner East, from 2d east to State, between Blair and Bingham.
- Wisner West, from 2d west, between Blair and Bingham.
- Woodward av, from mill pond north to city limits, 2 west of Flower av.

WARD BOUNDARIES.

The First ward comprises all that part of the city included in the following boundaries: Commencing at a point in the center of Thunder Bay river and the center of Second street, thence along the center of Second street to a point where it intersects the quarter line of section 27 in said city; thence west along said quarter line to the west line of section 28; thence south on west line of section 28 to the southwest corner of said section 28; thence east on south line of sections 28 and 27 to the shore of Thunder Bay; thence along the shore of Thunder Bay to the center of Thunder Bay river; thence up the center of Thunder Bay river to the place of beginning.

F. W. HAGEN, 410-412 Dock St.
 Sash, Doors, Glass, Putty, Paints, Oils, etc.

The Second ward includes all that part of said city within the following boundaries: Commencing at a point in the center of Thunder Bay river and Second street; thence along the center of Second street to a point where it intersects the quarter line of section 27; thence west along said quarter line to the west line of section 28; thence north on the west line of section 28 to the northwest corner of section 28; thence east along the north line of section 28 to a point in the center of Thunder Bay river where the center of said river intersects the north line of section 28; thence along the center of said river to a point where the center of river intersects with section line between sections 27 and 28; thence east along said section line to the northwest corner of northeast quarter of northeast quarter of section 28; thence south on quarter line to southwest corner of northeast quarter of northeast quarter of section 28; thence east on quarter line to a point where it intersects the center of Fifth street; thence along the center of Fifth street to a point where it intersects the center of Maple street; thence along the center of Maple street to a point where it intersects the center of Washington avenue; thence east along the center of Washington avenue to a point where the center of Washington avenue intersects the center of Plains street, to a point where the center of Plains street intersects the center of Fifth street; thence along the center of Fifth street to the corner of lots 20 and 21, in block 8, City of Alpena; thence on the line between said lots 20 and 21 to a point in the center of Thunder Bay river opposite said line; thence along down center of Thunder Bay river to place of beginning.

The Third ward includes all that part of said city included within the following boundaries: Commencing at a point in the middle of Thunder Bay river opposite a line between lots 20 and 21, in block 8; thence along between said lots 20 and 21, in block 8, to Fifth street; thence along the center of Fifth street to a point where Fifth street intersects with the center of Plains street; thence along the center of Plains street to a point where the center of Plains street intersects at the point in the center of Thunder Bay river with the east line of section 21; thence down along the center of said river to the place of beginning.

The Fourth ward includes all that portion of said city

FOR LISTS OF NAMES, R. L. POLK & CO.,
ANY TRADE, BUSINESS OR R. L. POLK & CO.,
PROFESSION, Address . . . R. L. POLK & CO.,
 DETROIT & CHICAGO

BOSTON RESTAURANT South 2d St.,
opposite
Masonic Temple
J. J. STOLL, Prop'r. { 21 Meal Tickets, \$4.00.
Board, \$3.50 per Week.

22

R. L. POLK & CO.'S

lying westerly and southerly of Thunder Bay river, not included in said wards First, Second and Third.

The Fifth ward includes all that part of the city within the following boundaries: Commencing at a point on the shore of Thunder Bay directly opposite a line between lots one and two in block one of Wade's addition to the city of Alpena; thence along in a direct line to the corner of lots one and two; thence on a line between said lots to Mill street; thence to and across Mill street to a point where Mill street intersects the center of Lake street; thence along the center of Lake street to a point where the center of Lake street intersects the section line between sections 22 and 23; thence north on said section line between sections 22, 23, 15 and 14, to the northeast corner of the northeast quarter of the southeast quarter of section 15; thence west in a direct line to the northwest corner of the northwest quarter of the southwest quarter of section 16; thence south along the west line of sections 16 and 21 to the center of Thunder Bay river; thence down along the center of Thunder Bay river to a point in center of said river directly opposite boundary line of Gilchrist lumber dock; thence along the outside boundary line of Gilchrist lumber dock and the shore of Thunder Bay to the place of beginning.

The Sixth ward includes all that portion of said city lying on the easterly and northerly side of said Thunder Bay river and not included in said Fifth ward.

CITY OFFICERS.

Office of the Mayor, n e cor Mill and Fletcher.
City election held first Monday in April.
Mayor—Frank W. Gilchrist.
Recorder—Robert J. Crable, office 106 W Chisholm.
Comptroller—James Bowden.
Treasurer—Robert E. Ellsworth.

APPOINTIVE OFFICERS.

City Attorney—I S Capfield.
Street Commissioner—Warren Heald.
Chief of Police—Jacob C Fockler.
Police Justice—John G. Beekman.
Chief Fire Dept—A L Power.
City Engineer—F A Rice.
City Physician—James W Small.

**TAKE TOLEDO, ST. LOUIS &
KANSAS CITY R. R.
FOR SOUTHWESTERN POINTS.**

Real Estate. O. L. PARTRIDGE,
Johnrowe Block,
106-108 N. 2d.

ALPENA CITY DIRECTORY.

23

Harbormaster—Jacob C Fockler.
Bridge Tender—Christopher Lund.
Poundmaster—Samuel I. Dafoe.
Sanitary Officer—John McSorley.

COMMON COUNCIL.

Meets first and third Monday evenings of each month in the Council Chamber, over Hose House No. 1, cor 3d and River.

Mayor—Frank W. Gilchrist.
President—Charles Golling.
Clerk—Robert J Crable.

ALDERMEN.

First Ward—Edward R. Wyman, F C Holmes.
Second Ward—Charles McGregor, Arthur A Le Roy.
Third Ward—J Charles Wood, Wm Kilbride.
Fourth Ward—Wm Alee, John Cable.
Fifth Ward—George W. Manion, Emery Martin.
Sixth Ward—Wm Reicks, John J Ash.

STANDING COMMITTEES.

Ways and Means—Holmes, Reicks, McGregor.
Streets and Sewers—Wyman, Le Roy, Kilbride.
Fire Department—Cable, Manion, Holmes.
Fire Limits—Wood, Cable, Kilbride.
Ordinances—Alee, Martin, Ash.
Liquor Bonds—City Attorney, McGregor, Wood, Manion.

BOARD OF EDUCATION.

Meets second Wednesday of each month at Recorder's Office.
President—Frank W. Gilchrist.
Secretary—R J Crable.
Treasurer—M N Bedford.
Superintendent—G A Hunt.
Principal—T Paul Hickey.
Trustees—1st Ward—Arthur G Hopper.
2d Ward—Charles W Trask.
3d Ward—Joseph L Reinke.
4th Ward—Charles T Park.
5th Ward—M N Bedford.
6th Ward—Fred W Hagen.

GRAND TRUNK RAILWAY SYSTEM For Niagara Falls, Toronto, Montreal,
Canada, Portland and the East.

SLOMAN'S OLD DIAMOND WEDDING WHISKEY.

BEST IN THE WORLD.

S. A. SLOMAN & CO., Cincinnati, O.

24

R. L. POLK & CO.'S

Executive Committee—F W Gilchrist, A G Hopper, M N Bedford, Charles T Park.

Examining Committee—G A Hunt, M N Bedford, A G Hopper.

Finance Committee—Charles W Trask, C T Park, Joseph L Reinke.

Library Committee—Fred W Hagen, Joseph L Reinke, Charles W Trask.

School Committee—M N Bedford, A G Hopper, Fred W Hagen.

BOARD OF EQUALIZATION AND REVIEW.

In session about the last week of May each year, in Council Chamber over Hose House No. 1.

MEMBERS.

The Comptroller, the City Attorney and one Supervisor for each ward, as follows:

1st Ward—James M Johnston, Chairman.

2d Ward—August Marwede.

3d Ward—Edward Maynard.

4th Ward—Robert J Crawford.

5th Ward—John Gillard.

6th Ward—Ole E Drag.

BOARD OF HEALTH.

Meets in Recorder's Office, second Friday of each month.

President—Nelson M Eddy.

Secretary—R J Crable.

Physician—James W Small.

Members—1st Ward—Andrew Morgan. 2d Ward—N M

Eddy. 3d Ward—Fred Huot. 4th Ward—John Mc-

Sorley. 5th Ward—Peter Roeschke. 6th Ward—

Adam Miller.

JUSTICES OF THE PEACE.

John G. Beekman, James L McDonald, Charles Cook.

CONSTABLES.

1st Ward—Samuel Malcolmson.

2d Ward—John Wiseman.

3d Ward—Stanislaus Halupniczak.

4th Ward—Wm A Smith.

5th Ward—Moses N Kesten.

6th Ward—John Barker.

James E. Field & Co. Drugs, Paints
• and Oils. •
119 N. SECOND ST.

H. G. Beach, HARDWARE, O. R.

105-107 N. 2d.

ALPENA CITY DIRECTORY.

25

BOARD OF POLICE COMMISSIONERS.

Meets the first Wednesday of each month, in Recorder's Office.

Albert L Power, President, term expires in 1900.

George Hanna, term expires in 1901.

W B Comstock, term expires in 1902.

Roland Hughes, term expires in 1903.

George B Holmes, term expires in 1904.

POLICE DEPARTMENT.

Headquarters—Hose House No 1.

Chief—Jacob C Fockler.

Judge—John G Beekman.

Sergeant—Vacant.

Patrolmen—Thomas Hardy, Daniel L Stout, Archibald Stewart, Charles A Dewar.

FIRE DEPARTMENT.

Headquarters—Cor 3d and River.

Chief—Albert L Power.

Assistant Chief—Emery Martin.

Hose House No 1—Cor 3d and River. Hose Cart—Foreman, Wm Graham. Driver, Frank E Hoffmann. Firemen, Wm T Ferguson, George L Slusser, David F Brown, Charles Carr, Christopher J Dane.

Hose House No 2—Fletcher, between Dock and Merchant. Hose Cart No 2—Foreman, Thomas Solomon. Driver, Alexander Jameson. Firemen, Herbert J Johnson, John A Wentworth, Charles M Parkes, Wm Edwards, Wm Harrison.

FIRE ALARM SIGNAL STATIONS.

Fire Bell Signals—One ring indicates territory south of Thunder Bay river and east of 3d st and south of W Washington av. Two rings—Territory south of Thunder Bay river and west of 3d st and north of W Washington av. Three rings—Territory north of Thunder Bay river.

Three taps on bell after an alarm of fire indicates that the fire is out.

Two taps on bell after an alarm of fire indicates that the companies have returned without having run out any hose.

CHICAGO, MILWAUKEE & ST. PAUL RY.

Best Road between Chicago and the West and North-west. Solid Vestibule Compartment Car Trains . . .