

EVERYBODY SHOULD HAVE THE EVENING NEWS.

Delivered daily at your home or place of business.
One cent a day or 25 cents a month.

290

R. L. POLK & CO.'S

McArthur Alexander, f. 29-30, 240, \$1100, Long Rapids, Long Rapids.
 McArthur Archibald, f. 30, 108, \$650, Long Rapids, Long Rapids.
 McArthur John, f. 24, 40, Long Rapids, Long Rapids.
 McArthur John, 27, 40, \$75, Maple Ridge, Alpena.
 McAuley Alex, 11, 94, \$250, Alpena, Alpena.
 McClarety Wm, f. 24, 40, \$110, Wilson, Alpena.
 McClure Edward, f. 7-18, 80, \$550, Long Rapids, Long Rapids.
 McClure John, f. 7-33, 160, \$1450, Long Rapids, Long Rapids.
 McCollam Archibald, blksmith, 33, 40, \$225, Long Rapids, Long Rapids.
 McCombs Wm, f. 5-8, 80, \$300, Long Rapids, Long Rapids.
 McConnel John, f. 3-4, 90, \$570, Long Rapids, Long Rapids.
 McDonald Alexander, f. 12, 80, \$300, Long Rapids, Long Rapids.
 McDonald Angus, f. 10, 80, \$350, Alpena, Alpena.
 McDonald Daniel R, f. 30, 227, \$1680, Long Rapids, Long Rapids.
 McDonald Donald, 5, 40, \$160, Ossineke, Alpena.
 McDonald Dougald, f. 8-17, 16, \$1680, Wilson, Alpena.
 McDonald Fannie, f. 11, 40, \$150, Alpena, Alpena.
 McDonald John A, hotel, 15, —, \$100, Alpena, Alpena.
 McDonald John B, f. 2, 80, \$225, Alpena, Alpena.
 McDonald Letta A, 19, 80, \$135, Maple Ridge, Alpena.
 McDonald Ronald, f. 12, 80, \$350, Long Rapids, Long Rapids.
 McDonald Thomas, f. 30, 40, \$300, Green, Flanders.
 McDonald Thomas jr, f. 30, 40, \$300, Green, Flanders.
 McDougal Kenneth, f. 14, 80, \$355, Maple Ridge, Alpena.
 McDowell Thomas, f. 32, 80, \$140, Green, Flanders.
 McEachren Andrew, f. 23-24, 40, \$200, Alpena, Alpena.
 McEwan Duncan, f. 25, 160, \$200, Long Rapids, Long Rapids.

Archie McInnis, { **CARRIAGE and WAGONMAKER.**
 Repairing Done at the Shortest Notice.
112 S. Third Street.

ALPENA COUNTY DIRECTORY.

291

McFadyen Archibald, f. 16, 40, \$150, Long Rapids, Long Rapids.
 McFarlin Abraham, f. 25, 40, \$120, Wilson, Alpena.
 McGee John, f. 14, 80, \$160, Long Rapids, Long Rapids.
 McGillis James, f. 11, 40, \$115, Maple Ridge, Cathro.
 McGillivray Wm, 25, 40, \$80, Long Rapids, Alpena.
 McGinn George, f. 33, 40, \$120, Green, Alpena.
 McGinn John, f. 19, 40, \$200, Green, Alpena.
 McGinn Margaret, f. 33, 80, \$250, Green, Alpena.
 McGinty Francis J, f. 3-4, 86, \$600, Long Rapids, Long Rapids.
 McHarg James, f. 31-32, 160, \$1330, Wilson, Alpena.
 McIntyre Mellville, f. 21, 40, \$120, Long Rapids, Long Rapids.
 McKay James, sailor, 12, 40, \$60, Maple Ridge.
 McKay James, f. 25, Ossineke, Hubbard Lake.
 McKay John, f. 2, 80, \$90, Wilson, Alpena.
 McKay Murdoch, f. 33, 40, \$210, Wilson, Alpena.
 McKay Thomas, genl store, 23-26, 120, \$330, Maple Ridge, Cathro.
 McKellar Angus, f. 23, 56, \$500, Wilson, Alpena.
 McKellar Archibald, 34, 40, \$150, Wilson, Hobson.
 McKellar John, grocer, 10, 40, \$330, Wilson, Alpena.
 McKenzie James, f. 5, 40, \$260, Wilson, Alpena.
 McKenzie John B, f. 4, 40, Long Rapids, Long Rapids.
 McKibbon Adam, f. 23-24, 80, \$135, Maple Ridge, Alpena.
 McKinnon John, f. 3, Ossineke, Hubbard Lake.
 McLaren Peter, f. 17, 120, \$580, Long Rapids, Long Rapids.
 McLaughlin James, f. 15, 80, \$240, Maple Ridge, Alpena.
 McLean Alexander, 22, 40, \$85, Maple Ridge, Cathro.
 McLellan John, f. 17, 160, \$240, Maple Ridge, Alpena.
 McLenburg Henry, f. 4-5, 120, \$240, Green, Alpena.
 McLennan Alexander, f. 4, 80, \$310, Green, Flanders.
 McLennan James, f. Maple Ridge, Cathro.
 McLennan John, f. 4, 35, \$200, Green, Alpena.

GRAND TRUNK RAILWAY SYSTEM For Niagara Falls, Toronto, Montreal, Canada, Portland and the East.

CHICAGO, MILWAUKEE & ST. PAUL RY.
 Best Road between Chicago and the West and North-west. Solid Vestibule Compartment Car Trains. . . .

C. H. REYNOLDS } City.... Jeweler

292

R. L. POLK & CO.'S

- McLennan Murdock, f and lumberman, 4, 114, \$530, Green, Alpena.
McMasters John, lab, 32, 40, \$60, Maple Ridge, Alpena.
McMillen Wm, f, 20, 100, \$200, Long Rapids, Long Rapids.
McNeil Alexander, f, 20, 100, \$200, Long Rapids, Long Rapids.
McNeil David, f, 9-29, 160, \$1400, Long Rapids, Long Rapids.
McNeil James, f, 19, 151, \$450, Long Rapids, Long Rapids.
McNeil John, f, 21, Ossineke, Hubbard Lake.
McNeil John P, f, 21-33, 155, \$1195, Long Rapids, Long Rapids.
McNeil Louis, f, 20, 80, \$200, Green, Alpena.
McNeil Philip, f, 20-29, 80, \$410, Long Rapids, Long Rapids.
McNeil Philip, f, 2, 80, \$130, Ossineke, Alpena.
McNeill John, f, 36, 80, \$280, Wilson, Alpena.
McNeill Richard, f, 36, 80, \$180, Wilson, Alpena.
McPhee Donald, f, 15, 40, \$100, Long Rapids, Long Rapids.
McPhee Malcolm, 34, 120, \$380, Long Rapids, Alpena.
McPhee Peter, f, 15, 160, \$730, Long Rapids, Long Rapids.
McRae Duncan, f, 7, 74, \$350, Long Rapids, Long Rapids.
Magen Frank, f lab, 15, 10, \$50, Alpena, Alpena.
Maharry Patrick, 1-6, 155, \$575, Long Rapids, Alpena.
Maikshirk Adolph, f, 18, 80, \$200, Sanborn, Ossineke.
Mailloux Napoleon, f, 29, 80, \$300, Alpena, Alpena.
Mailloux Oliver, f, 20, 80, \$225, Alpena, Alpena.
Mainville A, f, 14, 240, \$210, Sanborn, Ossineke.
Mainville John A, f, 29-31, 100, \$175, Alpena, Alpena.
Mainville Leon, f, 29-32, 120, \$250, Alpena, Alpena.
Mainville O D T, f, 29, 40, \$100, Alpena, Alpena.
Male Albert, f, 33, 30, \$175, Alpena, Alpena.
Malloy Michael, f, 16, 80, \$105, Sanborn, Ossineke.
Malyon Mrs, f, 8, 80, —, Maple Ridge, Bolton.

FISHING & Sportsmen's Goods.
TACKLE F. W. HAGEN, 410-412 DOCK ST.

PLUMBING } W. H. CAMPBELL, and Steam Fitting. } 113 East River St., ALPENA

ALPENA COUNTY DIRECTORY.

293

- Manion E P, dairy, 33, 204, \$650, Alpena, Alpena.
Manion Wm, f, 26-32, 160, \$1540, Long Rapids, Alpena.
Manion Wm, genl store, 16-21, 80, \$310, Maple Ridge, Alpena.
Manning Eliza, f, 20, 120, \$1600, Green, Flanders.
Manning George, twp clk, 29, 80, \$350, Green, Flanders.
Markowsky Casimir, f, 3, 40, \$135, Alpena, Alpena.
Markowsky Frank, dairy, 2, 80, \$200, Alpena, Alpena.
Markuson Ole, f, 4-5, 120, \$540, Long Rapids, Long Rapids.
Marsh George, f, 33, 40, \$130, Green, Alpena.
Marsh Henry, f, 3, 30, \$200, Wilson, Alpena.
Marsh Wm, f, 33, 40, \$100, Green, Alpena.
Marshal Rev, Ossineke, Hubbard Lake.
Marston Hiram, merchant and hotel, 33, $\frac{1}{2}$, \$500, Long Rapids, Long Rapids.
Martell Adolphus, f, 6, 165, \$600, Wilson, Alpena.
Martell Joseph, f, 35, 40, \$50, Wilson, Alpena.
Martell Louis, f, 7-12, 80, \$260, Wilson, Alpena.
Martin Alexander, f, 13, 40, \$150, Maple Ridge, Alpena.
Martin Cyrus, f, 27-28-34, 120, \$650, Long Rapids, Long Rapids.
Martin Frank, f, 12, 40, \$100, Maple Ridge, Alpena.
Martin John, f, 1-12, 143, \$510, Maple Ridge, Alpena.
Martindale D R, f and postmaster, 36, 200, \$2425, Long Rapids.
Martindale G E, f, 14, 200, \$400, Long Rapids, Long Rapids.
Marweds Ernest, f, 29, 70, \$400, Wilson, Alpena.
Marzeau John, f, 1, 40, \$100, Alpena, Alpena.
Mathersen Hans, f, 1, 40, \$100, Long Rapids, Long Rapids.
Matthews C J, f, 21, 80, \$180, Sanborn, Ossineke.
Matthews David, f, 32, 80, \$150, Ossineke, Hubbard Lake.
Matthews Edward, f, 30, 60, \$240, Wilson, Alpena.
Maxfield Dorr, f, 32, 80, \$280, Green, Flanders.
Mayer Ernest, f, 20, 80, \$260, Wilson, Alpena.
Melville Michael, f, 15, 80, \$320, Maple Ridge, Cathro.

FOR LISTS OF NAMES, R. L. POLK & CO.,
ANY TRADE, BUSINESS OR DETROIT & CHICAGO
PROFESSION, Address . . .

OYSTERS

At the BOSTON

Confectionery, Bread,
Cookies and Pies.



OYSTERS

RESTAURANT

116 S. Second St.

294

R. L. POLK & CO.'S

Menary Wm, f, 19-24, 169, \$400, Green, Alpena.
 Merril Frank, f, 23, 40, \$80, Long Rapids, Long Rapids.
 Merrill ———, f, 36, 80, \$160, Sanborn, Ossineke.
 Metka Wm, f, 19, 160, \$420, Maple Ridge, Orchard Hill.
 Metzkeski August, f, 17, 80, \$190, Maple Ridge, Alpena.
 Meyers A., f, 22, 80, \$120, Sanborn, Ossineke.
 Meyers John, f, 34, 40, \$40, Wilson, Alpena.
 Miles Jerry, f, 13, 80, \$60, Sanborn, Ossineke.
 Millen Mrs Andrew, 28, 120, \$925, Long Rapids, Alpena.
 Miller Christ, f, 30, 79, \$670, Wilson, Alpena.
 Miller Philip (est of), f, 26-35, 80, \$80, Long Rapids, Alpena.
 Miller Willie, f, 30, 40, \$130, Wilson, Alpena.
 Milroy Roger, f, 33, 160, \$650, Wilson, Alpena.
 Minton Lilly, f, 36, 40, \$95, Maple Ridge, Alpena.
 Mills Harvey, f, 35-36, 80, \$140, Green, Alpena.
 Moffatt Mrs James, f, 28, 80, \$160, Sanborn, Ossineke.
 Monaghan John, f, 24-25, 80, \$165, Maple Ridge, Alpena.
 Monaghan Wm, f, 29, 80, \$250, Alpena, Alpena.
 Monette Leon, f, 10, 40, \$80, Ossineke, Hubbard Lake.
 Monroe Alexander, f, 24, 40, \$175, Long Rapids, Long Rapids.
 Monroe Colin, f, 24-35, 160, \$450, Long Rapids, Long Rapids.
 Monroe Wm, f, 13, 40, \$40, Long Rapids, Alpena.
 Montague Mrs A, 8-9, 74, \$550, Alpena, Alpena.
 Montrose Robert, f, 7, 80, \$475, Maple Ridge, Alpena.
 Montroy Dony, f, 20, 33½, \$160, Sanborn, Alpena.
 Moore Ed, f, 32, 120, \$1700, Long Rapids, Long Rapids.
 Moore Michael, f, 30-31, 148, \$450, Maple Ridge, Orchard Hill.
 Moriarty John, f, 21-28, 20, \$1375, Long Rapids, Long Rapids.
 Morris Alexander, f, 31-32-33, 360, \$680, Alpena, Alpena.
 Morris Alexander, f, 16, 40, \$190, Maple Ridge, Cathro.
 Morris Mrs David, 9, 160, \$320, Alpena, Alpena.
 Morris Mrs Sarah, dairy, 29, 80, \$250, Alpena, Alpena.
 Morris Wm, f, 29, 160, \$350, Alpena, Alpena.

TAKE TOLEDO, ST. LOUIS & KANSAS CITY R. R.
 FOR SOUTHWESTERN POINTS

Lots For Sale. O. L. PARTRIDGE,

Johnrowe Block,
106-108 N. 2d.

ALPENA COUNTY DIRECTORY.

295

Morrison Walter, f, 20, 80, \$250, Green, Long Rapids.
 Morrison Walter, f, 17, 40, \$150, Long Rapids, Long Rapids.
 Morse Helena V, 21, 40, \$50, Ossineke, Alpena.
 Morse Henry R jr, f, 21, 160, \$500, Ossineke, Alpena.
 Morse Mnf g Co, 3, 80, \$140, Ossineke, Alpena.
 Morton James, f, 35, 40, \$100, Maple Ridge, Alpena.
 Motley Eugene, 20, 80, \$250, Long Rapids, Alpena.
 Moulds Albert, f, 17, 40, \$50, Maple Ridge, Bolton.
 Moulds Wm, f, 18, 40, \$50, Maple Ridge, Bolton.
 Muellerweiss John, merchant, 12, —, \$70, Sanborn, Alpena.
 Mullavey Michael, f, 16, 40, \$110, Maple Ridge, Bolton.
 Mulraney Wm, f, 17, 240, \$720, Wilson, Alpena.
 Mulvena David, f, 3-10, 421, \$3340, Wilson, Alpena.
 Mulvena Wm, f, 2-3, 280, \$2280, Wilson, Alpena.
 Munroe Daniel, f, 12, 40, \$110, Wilson, Alpena.
 Munson Wm, f, 25-36, 120, \$50, Sanborn, Ossineke.
 Murphy Daniel, f, 7-25, 120, \$240, Green, Flanders.
 Murphy John, f, 8, 80, \$135, Maple Ridge, Bolton.
 Murphy John J, f, 13-14-23, 200, \$430, Maple Ridge, Alpena.
 Murphy John J, f, 20-29, 200, \$1450, Wilson, Alpena.
 Murphy Michael, f, 20, 80, \$160, Wilson, Alpena.
 Murphy Peter J, f and shingle mill, \$100, Maple Ridge, Alpena.
 Murray A, f, 4, 39, \$60, Ossineke, Alpena.
 Murray Charles, f, 5, 80, \$580, Wilson, Alpena.
 Murry Walter, f, 17, 40, \$120, Long Rapids, Long Rapids.
 Mury John B, 18-19, 80, \$140, Green.
 Mussel John, f, 27-34, 80, \$200, Long Rapids, Long Rapids.
 Napper James, f, 12-13, 142, \$1110, Wilson, Alpena.
 Napper Robert, f, 17, 80, \$300, Alpena, Alpena.
 Napper Robert, 13, 160, \$600, Wilson, Alpena.
 Nash H F, f, 23, 120, \$95, Wilson, Alpena.
 Naylor Mrs Jane, f, 8-9, 100, \$500, Alpena, Alpena.
 Nearing Mrs Frank, f, 16, 80, \$290, Sanborn, Ossineke.
 Nearing Lewis, f, 16, 80, \$165, Sanborn, Ossineke.

Diamonds, Watches, Etc.
 C. H. REYNOLDS.

Sloman's Diamond Absolutely Pure
Wedding Rye. and Free
 from Drugs.

296

R. L. POLK & CO.'S

Neff Mrs Fannie, 21-28, 80, \$160, Sanborn, Alpena.
 Neindorf A, f, 27, 40, \$50, Ossineke, Hubbard Lake.
 Neirgarth Jacob, genl store, 19-25-36, 48, \$3990, Long
 Rapids, Alpena.
 Nelson John, f, 10, 80, \$100, Long Rapids, Long Rapids.
 Nelson Oscar, f, 29, 40, \$60, Ossineke, Hubbard Lake.
 Nering Edward, f, 6, 80, \$190, Ossineke, Alpena.
 Nevins Alexander, f, 18, 120, \$360, Long Rapids, Long
 Rapids.
 Newell Charles, f, 25, 40, \$50, Wilson, Alpena.
 Newkampski Metyk, f, 10, 80, \$185, Maple Ridge, Cathro.
 Newton Byron, f, 7, 35, \$200, Long Rapids, Bay City.
 Nichols Samuel J, f, 30, 40, \$600, Green, Flanders.
 Nicholson George, lumber, 19-20-21, 280, \$450, Maple
 Ridge, Alpena.
 Nicholson George R, 6, 68, \$90, Ossineke, Alpena.
 Nicholson John, f, 31-32, 160, \$1450, Long Rapids, Alpena
 Nietz Charles, f, 7-18, 83, \$100, Alpena, Alpena.
 Noack Charles, f, 35, 840, \$160, Alpena, Alpena.
 Noble Robert, f, 20, 80, \$160, Ossineke, Hubbard Lake.
 Noble Simon, f, 34, 60, \$120, Ossineke, Hubbard Lake.
 Nowland James, carp and f, 25, 40, \$160, Green, Flanders.
 Nugent John, f, 30, 80, \$380, Maple Ridge, Alpena.
 Ogdan Joseph, carp, 27, 57, \$60, Wilson, Alpena.
 Olarry Thomas, f, 10, 40, \$70, Ossineke, Hubbard Lake.
 Olesen Albert, 4, 40, —, Long Rapids, Long Rapids.
 Olesen Edda, 9, 80, \$250, Long Rapids, Long Rapids.
 Oleson Robert, lumberman, 12, 40, \$60, Alpena, Alpena.
 Oliver D D, f, 4, 40, \$40, Sanborn, Alpena.
 Oliver John, f, 13-15, 160, \$630, Maple Ridge, Alpena.
 Oliver Mrs. P, f, 12-24, 80, \$140, Sanborn, Ossineke.
 Oliver Robert, f, 12, 40, \$80, Alpena, Alpena.
 Oliver Mrs W, f, 5-32, 160, \$150, Alpena, Alpena.
 Olsen Christ, f, 8, 80, \$350, Long Rapids, Long Rapids.
 Olsen Hans, f, 2; 120, \$260, Long Rapids, Long Rapids.
 Olsen Louis, f, 9, 120, \$200, Long Rapids, Long Rapids.
 Olsen Otto, f, 4-9, 120, \$685, Long Rapids, Long Rapids.
 Olson Erik, f, 7, 80, \$100, Alpena, Alpena.

James E. Field & Co. Drugs, Paints
 • and Oils. •
 119 N. SECOND ST.

Hardware. **H. G. BEACH,**
 103-107 N. 2d.

ALPENA COUNTY DIRECTORY.

297

Olson Frank, lab, 32, 80, \$150, Sanborn, Alpena.
 Olson Gilbert, f, 17-18, 160, \$225, Alpena, Alpena.
 Olson Helge, f, 4; 80, \$80, Alpena, Alpena.
 Olson Marion, f, 12-18, 80, \$75, Alpena, Alpena.
 Olson Martin, f, 8, 80, \$300, Long Rapids, Long Rapids.
 Olson Mrs Olof, f, 8, 80, \$400, Long Rapids, Long Rapids.
 O'Neil Frank, f, 6, 80, \$70, Green, Flanders.
 O'Neil James, f, 36, 120, \$200, Green, Flanders.
 O'Neil Thomas, f, 31, 40, \$300, Green, Flanders.
 O'Neil Wm, f, 19, 40, \$200, Green, Flanders.
 Orsich Frank H, f, 16-21, 120, \$305, Sanborn, Ossineke.
 O'Toole Andrew, f, 29, 80, \$250, Wilson, Alpena.
 O'Toole Christopher, f, 30, 40, \$380, Wilson, Alpena.
 O'Toole James, f, 30, 80, \$350, Wilson, Alpena.
 O'Toole Patrick, f, 30, 80, \$640, Wilson, Alpena.
 O'Toole Patrick N, f, 28-29, 80, \$80, Wilson, Alpena.
 O'Toole Robert, f, 19, 80, \$180, Wilson, Alpena.
 Owens Stephen, f, 11, 117, \$250, Alpena, Alpena.
 Pack Albert (est of), 6-7, 80, \$80, Ossineke, Alpena.
 Pack Albert (est of), mnfr, 4, 40, \$30, Sanborn, Detroit.
 Pack George W, lumber, 31-32, 312, \$606, Maple Ridge.
 Palmer Napoleon, f, 36, 160, \$335, Maple Ridge, Alpena.
 Palms Francis F (est of), 18, 102, \$250, Alpena, Alpena.
 Parant Louis, f, 27-28, 52, \$70, Alpena, Alpena.
 Parant Peter, f, 28, 26, \$25, Alpena, Alpena.
 Parchin John, f, 25, 80, \$150, Alpena, Alpena.
 Parne Paul, f, 7, 80, \$150, Sanborn, Ossineke.
 Parrow Felix, f, 34, 80, \$190, Sanborn, Ossineke.
 Parrow George, f, 33, 80, \$165, Sanborn, Ossineke.
 Patnode Jeremiah, f, 19-20, 116½, \$150, Sanborn, Ossineke.
 Patnode Joseph, f, 7, 51, \$280, Wilson, Alpena.
 Patrowski ———, 36, 35, \$40, Long Rapids, Long Rapids.
 Patton Peter, 29, 40, \$240, Long Rapids, Long Rapids.
 Paul Charles, f, 6, 8, \$175, Sanborn, Ossineke.
 Paxton Edward, f, 27, 40, \$80, Green.
 Paxton Wm T, t, 32-33, 144, \$400, Alpena, Alpena.
 Payfer Charles B, f, 36, 80, \$235, Maple Ridge, Alpena.
 Peacock Lewis J, f, 23, 39, \$120, Wilson, Alpena.

CHICAGO, MILWAUKEE & ST. PAUL RY.
 Best Road between Chicago and the West and North-
 west. Solid Vestibule Compartment Car Trains. . . .

Read the *ALPENA EVENING NEWS*, 1 cent a day, and the *WEEKLY PIONEER*, \$1.00 per year, and you will read all the news.

298

R. L. POLK & CO.'S

Pechette Mary A, f, 33, 80, \$175, Sanborn, Ossineke.
 Peck Charles, f, 29, 40, \$60, Ossineke, Hubbard Lake.
 Peleran Wm, f, 4, 40, \$70, Ossineke, Hubbard Lake.
 Peller Joseph, f, 9, 80, \$120, Ossineke, Hubbard Lake.
 Pepkone F H, 21, 80, \$180, Sanborn, Ossineke.
 Perry James, f, 10, 40, \$75, Alpena, Alpena.
 Person Andrew, f, 17, 40, \$40, Alpena, Alpena.
 Petersen Hans, 1, 80, \$100, Long Rapids, Long Rapids.
 Peterson Martin, f, 32, 80, \$170, Sanborn, Ossineke.
 Pethrick James, f, 8, 80, \$100, Wilson, Alpena.
 Petsch Peter, f, 6, 40, \$80, Ossineke, Alpena.
 Phillips Eli, 3-4, 80, —, Long Rapids, Long Rapids.
 Phillips Alfred, 28, 200, \$340, Green, Au Sable.
 Phillips Phillip, 8, 40, \$100, Long Rapids, Alpena.
 Pillsbury Walter, f lab, 30, 1, \$100, Green, Flanders.
 Piper Joseph, f, 3, 85, \$125, Alpena, Alpena.
 Ploud Patrick, f, 5, 80, \$50, Alpena, Alpena.
 Pollash John, f, 5, 81, \$100, Sanborn, Alpena.
 Pollinsky Fred, mason, 8, 40, \$80, Sanborn, Alpena.
 Polson Hugh, 21, 80, \$200, Long Rapids, Long Rapids.
 Polson James, 19, 120, \$335, Long Rapids, Long Rapids.
 Portwine H and wife, f, 5, 128, \$950, Wilson, Alpena.
 Potter Mrs Ella J, f, 6, 179½, \$1150, Wilson, Alpena.
 Potter James J, 1-2-35, 349, \$1020, Long Rapids, Long Rapids.
 Potter Wm H (est of), 17-18-19-20, 921, \$3275, Alpena, Alpena.
 Potter Mrs Wm H, f, 31-34, 440, \$5700, Wilson, Alpena.
 Potvin Mrs Julien, 16, 20, \$175, Alpena, Alpena.
 Potvin Oliver, f, 20-33, 200, \$550, Alpena, Alpena.
 Pratt Alcide, f, 33, 40, \$130, Sanborn, Ossineke.
 Pratt Armedia, 15, 80, \$160, Long Rapids, Long Rapids.
 Precoire Edgar, f, 25, 40, \$50, Wilson, Alpena.
 Precoire Frank, f, 23, 40, \$100, Wilson, Alpena.
 Precoire Fred, f, 24, 40, \$80, Wilson, Alpena.
 Precoire Thomas, f, 25, 80, \$200, Wilson, Alpena.
 Preik Ludwig, f, 6, 40, \$70, Ossineke, Alpena.
 Preston Walter, f, 18, 40, Maple Ridge, Bolton.

THE HOLMES & KELSEY CO.
 WHOLESALE GROCERS and IMPORTERS,
 353 Dock, 108-110 Fletcher Sts.

Fine Watch and Jewelry Repairing.. } C. H. REYNOLDS

ALPENA COUNTY DIRECTORY.

299

Prevo Delore, blksmith, 6, 50, \$70, Wilson, Alpena.
 Prevo Joseph, f, 10, 40, \$50, Wilson, Alpena.
 Prevo Oliver, f, 12, 40, \$140, Wilson, Alpena.
 Prevost Mrs Ella, 13, 40, \$25, Wilson, Alpena.
 Prevost James, f, 19, 21½, \$30, Wilson, Alpena.
 Priest Sylvester, f, 26, 40, \$100, Alpena, Alpena.
 Priest Washington, f, 16, 20, \$150, Wilson, Alpena.
 Prieur Dominique, f, 28, 80, \$235, Alpena, Alpena.
 Prieur Felix, f, 12, 40½, \$125, Maple Ridge, Alpena.
 Prieur Joseph, f, 18, 102, \$150, Alpena, Alpena.
 Prieur Oliver, f, 31, 40, \$100, Alpena, Alpena.
 Prilop Ernest, f, 32, 40, \$130, Wilson, Alpena.
 Prince Frank A, f, 19, 20, \$30, Alpena, Alpena.
 Przlowsky Valentine, f, 16, 40, \$40, Alpena, Alpena.
 Pulford Mary A, 34-33, 329, \$275, Alpena, Alpena.
 Pulford Wm, f, 27-28, 80, \$40, Alpena, Alpena.
 Fushor Wm, f, 19, 280, \$2060, Green, Flanders
 Quantz John, f, 21, 80, \$200, Green, Alpena.
 Rabeau Thomas, f, 25, 120, \$150, Alpena, Alpena.
 Racette Frank X, f, 28, 80, \$150, Alpena, Alpena.
 Racette Frank jr, f, 28, 80, \$100, Alpena, Alpena.
 Radford John, f lab, 11, 25, \$25, Alpena, Alpena.
 Randal Jacob, 21, 80, \$375, Long Rapids, Long Rapids.
 Rawling Mrs Wm, f, 32, 80, \$475, Wilson, Alpena.
 Rayburn Benjamin E, f and town treas, 33, 40, \$60, Ossineke, Hubbard Lake.
 Rayburn E B, f, 28-33, 80, \$370, Ossineke, Hubbard Lake.
 Rayburn Martha, f, 14, 80, \$100, Ossineke, Hubbard Lake.
 Rayburn Robert, f, 20-29, 120, \$209, Ossineke, Hubbard Lake.
 Reaome Frank, f, 10, 40, \$100, Ossineke, Hubbard Lake.
 Reeder Isaac, f, 25, 80, \$60, Wilson, Alpena.
 Reid John L, f, 26, 59, \$100, Green, Flanders.
 Reinas Fred, f, 5, 40, \$70, Ossineke, Alpena.
 Reinke Joseph, f, 9, 80, \$80, Alpena, Alpena.
 Reinke Paul, gardener, 4, 90, \$160, Alpena, Alpena.
 Reskey August, f, 8, 80, \$160, Sanborn, Ossineke.
 Reusberry Alexander, f, 30, 39, \$60, Alpena, Alpena.

Take Chicago & Grand Trunk R'y. Chicago
 (Grand Trunk Railway System.) **FOR AND THE WEST.**

The AMERICAN LAND AND TITLE REGISTER

is the only National Real Estate paper.
\$1.00 per year. 122 LaSalle St., Chicago, Ill.

300

R. L. POLK & CO.'S

Reusberry John, f, 5-6-7, 175, \$375, Alpena, Alpena.
Revoir Adolph, f, 24, 40, \$65, Maple Ridge, Alpena.
Reynolds Arthur, 22, 40, \$100, Long Rapids, Long Rapids
Reynolds Eldo, 26, 80, \$160, Long Rapids, Long Rapids.
Reynolds James, 35, 80, \$600, Long Rapids, Long Rapids.
Reynolds John B, 2, 80, —, Long Rapids, Long Rapids.
Rheneshaski Thomas H, 3, 80, —, Long Rapids, Pasen.
Richards Albert, f, 26, 40, \$50, Wilson, Alpena.
Richards John, 27, 80, \$375, Long Rapids, Long Rapids.
Richardson Albert, 16, 40, \$120, Long Rapids, Alpena.
Richardson Allen, 15, 40, \$140, Long Rapids, Alpena.
Richardson Allen, 22, 80, \$860, Wilson, Alpena.
Richardson Fred T, landlooker, 12, 40, \$80, Maple Ridge, Alpena.
Richardson F L, lumberman, 12, 40, \$50, Alpena, Alpena.
Richardson F L Plum Co, 20, 80, \$650, Green, Alpena.
Richardson John, f, 21-28, 160, \$480, Green, Flanders.
Richardson Joseph, f, 30, 120, \$230, Alpena, Alpena.
Richardson Levi P, f, 31, 80, \$350, Green, Flanders.
Richardson Louis, musician, 21-28-29, 200, \$290, Green, Flanders.
Richardson Mary, f, 20, 80, \$500, Green, Flanders.
Richardson Nancy J, f, 19-29-30, 280, \$1790, Green, Flanders.
Richardson Walter S, 28, 80, \$450, Green, Flanders.
Richmond, Alexander, 34, Ossineke, Alpena.
Riley Peter, f, 3, 80, \$250, Alpena, Alpena.
Ripley J, f, 32, 80, \$150, Alpena, Alpena.
Ritchie Andrew, f, 10, 40, \$280, Wilson, Alpena.
Rithaler Henry, f, 29, 40, \$160, Wilson, Alpena.
Rivard Peter, f, 31, 80, \$250, Alpena, Alpena.
Roach Dennis J, saloon, 23, 160, \$320, Maple Ridge, Alpena.
Robarge Benjamin, f, 4, 130, \$670, Maple Ridge, Bolton.
Robarge Benjamin jr, f, 4, 65, \$300, Maple Ridge, Bolton.
Robarge Ignace, saloon, 9, 116½, \$550, Maple Ridge, Bolton.
Robarge Napoleon, f, 9, 80, \$375, Maple Ridge, Bolton.

MISSOURI...
MPACIFIC RY. } Best
ROUTE 1 FROM
ST. LOUIS to
all Points West
and Southwest

Photos of Children a Specialty.

330 DOCK ST.

ALPENA COUNTY DIRECTORY.

301

Robbins Alfred, f, 24, Ossineke, Hubbard Lake.
Robbins Joseph, f, 11, 40, \$50, Wilson, Alpena.
Roberts Barney, f, 20, 40, \$150, Alpena, Alpena.
Robinette Oliver, f, 24, 120, \$470, Maple Ridge, Alpena.
Robinson George, f, 25-35, 154, \$330, Alpena, Alpena.
Robinson Mawhinney, f, 26, 80, \$250, Alpena, Alpena.
Robson Thomas, f, 8, 80, \$720, Wilson, Alpena.
Rockwood Elijah (est of), 6, 74, \$50, Long Rapids, Long Rapids.
Roe Rev Wm G, 30, 80, \$200, Alpena, Alpena.
Rondeau Oliver, f, 33, 80, \$200, Sanborn, Ossineke.
Root Oliver, 15, 80, \$200, Long Rapids, Long Rapids.
Rose Sarah F, f, 23-24, 176, \$360.
Roshowick Vladislav, f, 1, 40, \$100, Long Rapids, Pasen.
Ross Isabelle, f, 32, 840, \$100, Alpena, Alpena.
Ross Thomas, f, 32, 40, \$125, Alpena, Alpena.
Rouleau Philip, f, 30, 80, \$300, Alpena, Alpena.
Rousseau Louis, f, 23, 40, \$110, Wilson, Alpena.
Rulo Frank, f, 35, 40, \$50, Wilson, Alpena.
Russel James, f, 33, 87, \$190, Maple Ridge, Alpena.
Russel Matthew, f, 28, 80, \$20, Maple Ridge, Alpena.
Rustand Andrew, f, 31, 80, \$160, Sanborn, Ossineke.
Ryan Patrick, f, 25, 80, \$110, Wilson, Alpena.
Sage & Co, mnfrs, 7, 80, \$140, Sanborn, Bay City.
St Charles Charles, f, 9, 80, \$130, Ossineke, Alpena.
St Charles Deler, f, 9, 40, \$60, Ossineke, Alpena.
St Charles Lazone, f, 17-20, 120, \$325, Sanborn, Ossineke.
St John Warren, f, 27, 80, \$150, Maple Ridge, Alpena.
St Onge Joseph, f, 3, 80, \$170, Ossineke, Alpena.
St Onge Patrick, f, 22, 80, \$150, Alpena, Alpena.
St Onge Telesphore, butcher, 16-31, 165, \$800, Alpena, Alpena.
Sampson Mrs T, 20-21, 122, \$175, Sanborn, Alpena.
Sanborn James L, f, 11-12-14, 160, \$435, Sanborn, Ossineke.
Sanborn John, 21, 120, \$680, Long Rapids, Long Rapids.

GRAND TRUNK RAILWAY SYSTEM For Niagara Falls, Toronto, Montreal, Canada, Portland and the East.

Geo. R. Colbath, FOR FIRST-CLASS
PIANOS AND ORGANS,
 The Reliable Music Dealer, 309 and 311 W. Chisholm St.

302

R. L. POLK & CO.'S

Sanborn John E. merchant. —, —, \$130, Sanborn, Ossineke.
 Sanborn Wellington, 17, 200, \$480, Long Rapids, Long Rapids.
 Sanborn Wm H, cedar, —, —, \$200, Sanborn, Alpena.
 Schelezsky Peter, f, 4, 30, \$150, Alpena, Alpena.
 Schenk E, f, 21, 40, \$40, Wilson, Alpena.
 Schenk Wm, f, 21, 200, \$800, Wilson, Alpena.
 Schmoldt Julius, f, 10, 80, \$330, Maple Ridge, Cathro.
 Schrader Henry, f, 14, 40, \$300, Maple Ridge, Cathro.
 Schram Thomas, f, 25, 40, \$115, Wilson, Alpena.
 Schram Mrs Thomas, f, 36, 20, \$20, Wilson, Alpena.
 Schultz Fred, lab, 27, 40, \$55, Sanborn, Alpena.
 Schultz Frederick, f, 5, 40, \$130, Ossineke, Alpena.
 Scott Albert, 21, 80, \$300, Long Rapids, Long Rapids.
 Scott Richard, f, 19, 84, \$460, Green, Hillman.
 Scott Robert, f, 21, 80, \$130, Ossineke, Hubbard Lake.
 Scott Wm, 17-18, 44, \$80, Long Rapids, Hillman.
 Scott Wm F, f, 3, 80, \$240, Ossineke, Hubbard Lake.
 Scropp Andrew, f, 5, 83, \$100, Ossineke, Alpena.
 Seabert John, 35, 40, \$50, Green.
 Seck John, f, 18, 62, \$330, Wilson, Alpena.
 Seguin Arthur, 19, 67, \$110, Long Rapids, Godfrey.
 Selewski Henry, f, 31, 60, \$200, Wilson, Alpena.
 Sharp Moses, f, 17-20-21, 240, \$550, Maple Ridge, Bolton.
 Shaw James, f, 26, 36, \$80, Green, Flanders.
 Shaw Mrs Lewis J, f, 60, \$80, Wilson, Alpena.
 Shay John, 15, 40, \$200, Long Rapids, Alpena.
 Shea John, 22, 80, \$1040, Wilson, Alpena.
 Shears James L, f, 18, 93, \$400, Green, Alpena.
 Sheldon Allen & Co, 3, 40, \$40, Ossineke, Alpena.
 Sheldon Ham, 6-29, 160, \$300, Long Rapids, Godfrey.
 Sheldon Leonard, 30, 40, \$200, Long Rapids, Godfrey.
 Shell Edward, 23, 80, \$530, Wilson, Alpena.
 Shell Joseph, 23, 109, \$1370, Wilson, Alpena.
 Shelly James S, f, 22-27, 80, \$220, Maple Ridge, Cathro.
 Shephard Richard, f, 3, —, —, Wilson, Alpena.
 Sholts Joseph, f, 29, 40, \$10, Maple Ridge, Orchard Hill.

MATTRESSES of all kinds made
 on short notice.
 Alpena Mattress Works.

Lots For Sale. **O. L. PARTRIDGE,**
 Johnrowe Block,
 106-108 N. 2d.

ALPENA COUNTY DIRECTORY.

303

Sholtz August, f, 16, 40, \$70, Wilson, Alpena.
 Sholtz Englehart, f, 15, 40, \$60, Wilson, Alpena.
 Shomansky Charles, f, 7, 40, \$60, Ossineke, Alpena.
 Shooks Mrs August, 35-36, 80, —, Long Rapids, Long Rapids.
 Shulewski Peter, f, 18, 40, \$60, Maple Ridge, Alpena.
 Shunk F, f, 27, 40, \$60, Ossineke, Hubbard Lake.
 Shunk J, f, 28, 40, \$80, Ossineke, Hubbard Lake.
 Sievert August, f, 31, 60, \$150, Wilson, Alpena.
 Sievert Emil, f, 28, 80, \$230, Wilson, Alpena.
 Simmons Elizabeth, 6, 46, \$200, Long Rapids, Ossineke.
 Simmons Jane (est of), 6, 44, \$500, Long Rapids, Long Rapids.
 Simmons John (est of), 29, 80, \$200, Long Rapids, Long Rapids.
 Simmons John, f and town clk, 34, 60, \$200, Ossineke, Hubbard Lake.
 Simmons Wm, f, 9, 40, \$150, Wilson, Alpena.
 Sims J, f, 10, 40, \$70, Ossineke, Alpena.
 Sine E H, 3, 40, \$100, Alpena, Alpena.
 Small Bros, physicians, 16, 80, \$300, Alpena, Alpena.
 Smart James, 36, 80, \$525, Long Rapids, Long Rapids.
 Smart James jr, f, 33, 8, \$700, Long Rapids, Long Rapids.
 Smart Mrs John, 24, 40, \$30, Long Rapids, Long Rapids.
 Smigelski Antoine, f, 3, 40, \$300, Maple Ridge, Alpena.
 Smigelski John, f, 1, 80, \$300, Maple Ridge, Alpena.
 Smith Mrs Andrew, f, 33, 17, \$100, Alpena, Alpena.
 Smith A W, f, 16, 80, \$100, Alpena, Alpena.
 Smith Charles, f, 26, 80, \$80, Green, Alpena.
 Smith Elmer, 23, 80, \$80, Green, Alpena.
 Smith Frank, f, 4-9, 80, \$360, Wilson, Alpena.
 Smith Mrs Fred, f, 6, 40, \$50, Alpena, Alpena.
 Smith Fred P, 33-34, 199, \$1950, Long Rapids, Long Rapids.
 Smith George A, f, 10, 40, \$80, Wilson, Alpena.
 Smith George J, f, 3-4, 120, \$470, Wilson, Alpena.
 Smith Gilbert, 15-16, 120, \$470, Long Rapids, Long Rapids.
 Smith Harford, 23-26-27-35, 345, \$660, Green, Alpena.

TAKE TOLEDO, ST. LOUIS &
KANSAS CITY R. R.
 FOR SOUTHWESTERN POINTS.

The AMERICAN LAND AND TITLE REGISTER
 is the only National Real Estate paper.
 \$1.00 per year. 122 LaSalle St., Chicago, Ill.

304

R. L. POLK & CO.'S

Smith John, fisherman, 21, 25, \$25, Alpena, Alpena.
 Smith John, 1, 40, \$100, Long Rapids, Long Rapids.
 Smith Joseph K, f, 4-9, 130, \$600, Wilson, Alpena.
 Smith Malcolm, 35, 36, \$100, Wilson, Hobson.
 Smith Mathew, f lab, 30, 40, \$50, Alpena, Alpena.
 Smith Michael, blksmith, 24, 40, \$370, Wilson, Alpena.
 Smith Thomas, f, 11, 80, \$330, Wilson, Alpena.
 Smith Wm A, f, 10-15, 80, \$110, Wilson, Alpena.
 Smith Wm H, f, 4, 87, \$900, Wilson, Alpena.
 Snider Isaac, 16, 40, \$175, Long Rapids, Long Rapids.
 Snider John, 16, 40, \$180, Long Rapids, Long Rapids.
 Snider John O, 23-31, 79, \$705, Long Rapids, Long Rapids.
 Snider Walter, f, 5, 40, \$95, Maple Ridge, Bolton.
 Snider Wm, 9, 40, \$260, Long Rapids, Long Rapids.
 Sobeck Thomas, f, 2, 40, \$125, Alpena, Alpena.
 Somers G E, f, 13, 40, \$25, Wilson, Alpena.
 Soper Charles W, 5-9, 80, \$400, Long Rapids, Long Rapids.
 Soper Frank L, 45, 80, \$505, Long Rapids, Long Rapids.
 Soper Helman J, f, 4, 80, \$340, Long Rapids, Long Rapids.
 Soper John J, 4, 160, \$555, Long Rapids, Long Rapids.
 Soper L P, f, 13, 40, —, Long Rapids, Long Rapids.
 Soper O W, saw and grist mill, 3, 116, \$625, Long Rapids, Long Rapids.
 Soper Paul, 22, 40, \$200, Wilson, Alpena.
 Soper Severet, 11, 80, —, Long Rapids, Long Rapids.
 Spain Cornelius, f, 20-21, 160, \$520, Green, Flanders.
 Spain Neil, f, 30, 1, \$100, Green, Flanders.
 Spragg James, f, 9, 40, \$70, Ossineke, Alpena.
 Spratt Clay, f, 25, 40, \$100, Green, Alpena.
 Spratt Melvin B, f, 24-25-30, 560, \$2080, Green, Alpena.
 Spratt Mrs T G, 23, 95, \$230, Wilson.
 Stafford Thomas, f, 16-17, 160, \$1260, Wilson, Alpena.
 Standen John, sawmill, 28, 8, \$120, Wilson, Alpena.
 Starr Moses, f, 14-34, 160, \$300, Alpena, Alpena.
 Steele Wm, 12, 120, \$365, Long Rapids, Grand Marias.
 Stevens Fred, f, 36, 120, \$220, Maple Ridge, Alpena.
 Stevens Robert, 34, 40, \$60, Long Rapids, Alpena.
 Stillwell John, f lab, 28, 80, \$200, Green, Flanders.

James E. Field & Co. Stationery and Wall Paper.
 119 N. SECOND ST.

Short time
 Bundles a
 Specialty.

Michigan Laundry.

ALPENA COUNTY DIRECTORY.

305

Stinson John, f, 25, 80, \$40, Green, Alpena.
 Stoddart Floyd, f, 10, 20, \$60, Ossineke, Alpena.
 Stone Richard, 4, 80, —, Long Rapids, Godfrey.
 Stoner H W, 28, 40, —, Wilson, Alpena.
 Stormey Mrs George, f, 12, 80, \$160, Alpena, Alpena.
 Stovel George, f, 18, 80, \$120, Ossineke, Alpena.
 Stovell George W, f, 32, 80, \$360, Ossineke, Hubbard Lake.
 Stovelle E E, f, 29, 80, \$130, Ossineke, Hubbard Lake.
 Stoville H C, f, 29, 80, \$310, Ossineke, Hubbard Lake.
 Stubbs George, f, 1-3-4-13-23-21-32-36, 798, \$1600.
 Suchecki Vladislav, f, 1, 40, \$125, Long Rapids, Pasen.
 Summerfield H, f, 22, 80, \$160, Sanborn, Ossineke.
 Swartzholt Edward, f, 21, 40, \$130, Wilson, Alpena.
 Swatinski Frank, f, 19, 80, \$165, Sanborn, Ossineke.
 Switatako Frank, 1, 40, \$80, Long Rapids, Pasen.
 Sylvester David, f, 6, 45, \$100, Alpena, Alpena.
 Sylvester Lazarre, f, 21, 40, \$150, Alpena, Alpena.
 SYLVESTER LYMAN J, Postmaster, Landlooker, Dealer in Ties, Posts and Poles, 30-31, 386, \$2410, Green, Flanders and Hotel Cobden, Alpena.
 Sylvester & Jones, f, 27-34, 120, \$90, Green, Flanders.
 Tadaveski August, f, 2-11, 80, \$240, Maple Ridge, Cathro.
 Tait John, f, 26, 80, \$180, Maple Ridge, Cathro.
 Tait Thomas f, 22-27, 200, \$530, Maple Ridge, Cathro.
 Tait Thomas jr, f, 22, 40, \$60, Maple Ridge, Cathro.
 Tammarack Carl f, 30, 40, \$40, Alpena, Alpena.
 Taylor Oliver, f, 16-17, 120, \$350, Alpena, Alpena.
 Tesky David, f, 33, 80, \$170, Sanborn, Ossineke.
 Tesky John, f, 33, 80, \$175, Sanborn, Ossineke.
 Tesky Robert, J, f, 32, 80, \$130, Sanborn, Ossineke.
 Thiems Wm, f, 30, 120, \$820, Wilson, Alpena.
 Thoman Peter, f, 5, 40, \$50, Alpena, Alpena.
 Thomas Wilson, 8, 80, \$160, Long Rapids, Long Rapids.
 Thompson Henry, f, 34, 80, \$250, Ossineke, Hubbard Lake.
 Thompson James, f, 9, 80, \$325, Maple Ridge, Bolton.
 Thompson Thomas, f, 26, 80, \$80, Green, Alpena.
 Thomson David, f, 36, 160, \$330, Green, Flanders.
 Thomson John, f lab, 3, 93, \$100, Alpena, Alpena.

MISSOURI . . . } **Best** **ROUTE FROM ST. LOUIS to all Points West and Southwest**
MPACIFIC RY.

JOB PRINTING.

Everything from a calling card to a law record printed on short notice at the

E. S. MEERS,
Publisher and Proprietor.

PIONEER OFFICE.

306

R. L. POLK & CO.'S

Thomson Sarah, f, 23, 80, \$200, Green, Flanders.
 Thorn Euler, f, 28, 80, \$600, Long Rapids, Long Rapids.
 Thorpe George, f, 34, 80, \$90, Wilson, Alpena.
 Timmreck Wm, f, 5, 57½, \$165, Maple Ridge, Bolton.
 Tingleton James, f, 29, 40, \$225, Wilson, Alpena.
 Titus Benjamin, cook, 15, 40, \$220, Maple Ridge, Cathro.
 Titus Charles, lab, 22, 20, \$30, Maple Ridge, Cathro.
 Titus Jonas D, f, 11, 40, \$190, Maple Ridge, Cathro.
 Todd James M, f, 5-6, 75, \$1100, Long Rapids, Long Rapids.
 Toland E H, f, 5-11-12-14-15-22-23-26-27, 1860, \$1065, Sanborn, Ossineke.
 Toland Mrs M, f, 12-34, 160, \$460, Sanborn, Ossineke.
 Toland Wm H, f, 20, 80, \$170, Sanborn, Ossineke.
 Tomshark John, f, 4, 92, \$90.
 Tott Fred, 25, 160, \$750, Wilson, Hobson.
 Tows Ernest, f, 24, 40, \$80, Long Rapids, Long Rapids.
 Treaster J B, f, 5, 77, \$250, Alpena, Alpena.
 Trissler August, lab, 16, 40, \$60, Maple Ridge, Alpena.
 Truax Aaron, 30, 31, \$120, Long Rapids, Godfrey.
 Truax Burt, f, 30, 40, \$100, Long Rapids, Godfrey.
 Truax Frederick, f, 31, 40, —, Long Rapids, Godfrey.
 Truax George f, 29, 80, \$400, Long Rapids, Godfrey.
 Truax Wm, f, 19, 40, \$100, Long Rapids, Godfrey.
 Tryon Charles, f, 26, 40, \$100, Alpena, Alpena.
 Tucker Adelbert, f, 19, 39, \$100, Long Rapids, Long Rapids.
 Tucker Grizzle E, 10, 40, \$55, Sanborn, Ossineke.
 Tucker Hiram, f, 5, 80, \$140, Maple Ridge, Bolton.
 Tucker John, f, 4, 50½, \$300, Wilson, Alpena.
 Tugey James H, 36, 160, \$1,050, Wilson, Alpena.
 Turk Wm, f, 5, 40, \$80, Long Rapids, Godfrey.
 Turnbull J D, lawyer, 2-21, 239, \$1,400, Alpena, Alpena.
 Turner Collin, 26, 40, \$130, Wilson, Alpena.
 Turner Daniel, 26, 40, \$160, Wilson, Hobson.
 Turner Donald, 34, 80, \$450, Wilson, Alpena.
 Turner Henry, member School Board and County Road Commission, 24, 80, \$1150, Green, Flanders.

GRAND TRUNK RAILWAY SYSTEM For Niagara Falls, Toronto, Montreal, Canada, Portland and the East.

Archie McInnis, { HORSESHOEING. 112 S. Third Street.

ALPENA COUNTY DIRECTORY.

307

Tweeten Martin, 6, 40, \$120, Long Rapids.
 Tyron Fred, f, 7, 40, \$130, Sanborn, Ossineke.
 Umphrey James, f, 15, 80, \$160, Long Rapids, Long Rapids.
 Umphrey John, f, 16, 40, \$120, Long Rapids, Long Rapids.
 Union Hall Co, 30, 1, \$200, Green, Flanders.
 Van Alstine Alice, 21, 20, \$50, Wilson, Alpena.
 Van Alstine Culver, 3, 40, \$80, Ossineke, Alpena.
 Vannere Edward, f, 32, 80, \$100, Green, Flanders.
 Van Sipe Henry, f, 30-31, 200, \$325, Alpena, Alpena.
 Van Sipe Louis, f, 1, 73, \$225, Alpena, Alpena.
 Vasseur Adolph, f, 33, 40, \$75, Alpena, Alpena.
 Vasseur Alexander, f, 33, 72, \$125, Alpena, Alpena.
 Vassuer Joseph, f, 33, 72, \$70, Alpena, Alpena.
 Vechmewski John, f, 2, 80, \$300, Maple Ridge, Cathro.
 Viall John C, publisher, 31, 200, \$200, Alpena, Alpena.
 Vilenau George, f, 18, 66, \$150, Long Rapids, Godfrey.
 Vrooman Mary, f, 1, 40, \$115, Maple Ridge, Alpena.
 Wagemeyer Ernest, f, 32, 80, \$320, Wilson, Alpena.
 Wagner Adolph, 27, 40, \$260, Wilson, Hobson.
 Wagner Frank, blksmith, 20, 40, \$320, Wilson, Alpena.
 Wagner Otto, f, 1, 79, \$100, Ossineke, Alpena.
 Wagoner Andrew, f, 5, 80, \$150, Ossineke, Alpena.
 Walker James C, 8-9, 120, \$400, Alpena, Alpena.
 Walker John, f, 5, 50, \$190, Maple Ridge, Bolton.
 Walker Thomas, f, 2, 160, \$420, Ossineke, Alpena.
 Walker Thomas jr, f, 2, Ossineke, Hubbard Lake.
 Wallace John, 34, 35, 80, \$390, Wilson, Hobson.
 Wallace Samuel, 26, 80, \$650, Wilson, Hobson.
 Walmsley Charles, f, 2, 73, \$150.
 Waltenberg Wm, f, 11, 80, \$100, Alpena, Alpena.
 Wang Samuel, f, 5, 80, \$400, Long Rapids, Long Rapids.
 Warner S A L, 5, 80, \$200, Ossineke, Alpena.
 Warner S L, 9, 40, \$150, Alpena, Alpena.
 Warth Wm, f, 22, 140, \$530, Wilson, Alpena.
 Watkins John, f, 20, 80, Long Rapids, Godfrey.
 Wedge Daniel, f, 14, 40, \$220, Maple Ridge, Cathro.
 Wedge John, f, 14, 40, \$135, Maple Ridge, Cathro.

CHICAGO, MILWAUKEE & ST. PAUL RY.
 Best Road between Chicago and the West and North-
 west. Solid Vestibule Compartment Car Trains. . . .

**Fine Watch
and Jewelry
Repairing..**

C. H. REYNOLDS

308

R. L. POLK & CO.'S

Wedge Samuel, f, 11, 40, \$180, Maple Ridge, Cathro.
Weine John, f, 13, 80, \$125, Alpena, Alpena.
WEINE PAUL, f and Supervisor, 14, 40, \$125, Alpena, Alpena.
Weisskowski Martin, f, 6, 81½, \$240, Maple Ridge, Bolton.
Welch Hartley, 25, 10, \$50, Green, Flosada.
Welsh Dennis, f, 25, 160, \$240, Maple Ridge, Alpena.
Wentworth John P, f, 20, 80, \$450, Green, Alpena.
Wessel Annette, f, 2, 46, \$100, Alpena, Alpena.
Wessel Conrad, f, 2, 40, \$150, Alpena, Alpena.
Wetmore Jacob S, 8, 280, \$180, Ossineke.
Wheaton James, 29, 80, \$160, Long Rapids.
Wheaton James, f, 10, 40, \$70, Wilson, Alpena.
Whecht Michael, 4, 30, \$50, Alpena, Alpena.
Wheeler F M, 29, 80, \$240, Maple Ridge, Alpena.
White Edward, f, 14-26, 200, \$920, Long Rapids, Orchard Hill.
White Frederick, f, 26, 80, \$250, Long Rapids, Orchard Hill
White George, f, 21, 80, \$260, Maple Ridge, Cathro.
White John, f, 27, 80, \$170, Sanborn, Ossineke.
White Nelson, f, 14, 50, \$450, Wilson, Alpena.
White Robert, f, 16, 22, 120, \$250, Maple Ridge, Cathro.
Wiese Herman, f, 19, 200, \$310, Alpena., Alpena.
Wiggins Nathan, f, 21, 40, \$300, Maple Ridge, Bolton.
Wiggins, f, 10, 40, \$50, Sanborn, Ossineke.
Wilcox Abel, f, 25, 85, \$75, Wilson, Alpena.
Wilcox Edward, 36, 60, \$120, Long Rapids, Alpena.
Wilds Alfred, f, 6, 40, \$30, Maple Ridge, Orchard Hill.
Wiley George, f, 32, 82, \$900, Wilson, Alpena.
Wilkinson Dr A, 5, 80, \$120, Ossineke, Alpena.
Willett James, f, 30, 87½, \$310, Wilson, Alpena.
Williams Henry, f, 4, 80, \$260, Long Rapids, Long Rapids.
Willson Louis, f, 8, 160, \$500, Long Rapids, Long Rapids.
Wilson Ernest, f, 26, 80, \$160, Long Rapids, Long Rapids.
Wilson Fred, f, 13-24, 80, \$160, Long Rapids, Long Rapids
Wilson John M, f, 25, 80, \$800, Long Rapids, Long Rapids
Wilson Peter, f, 22, 80, \$160, Long Rapids, Long Rapids.
Wilson Mrs Peter, f, 26, 80, \$650, Long Rapids, Long Rapids.

F. W. HAGEN, 410-412 Dock St.

Fishing Tackle, Ammunition, Rifles and Shot Guns.

**MILL AND MARINE WORK AND
ENGINEERS' SUPPLIES**
W. H. CAMPBELL, 113 E. River St., ALPENA.

ALPENA COUNTY DIRECTORY.

309

Wilson Peter A, f, 26, 80, \$450, Long Rapids, Long Rapids.
Wilson Wm, f, 7, 75, \$100, Alpena, Alpena.
Windrass John, f, 31, 93, \$800, Long Rapids, Long Rapids.
Wingrove Ella, 9, 40, \$100, Alpena, Alpena.
Wingrove Mary, 9, 15, \$50, Alpena, Alpena.
Wise Charles H, 23, 160, \$1,455, Wilson, Hobson.
Wishowski Martin, f, 1-2, 124, \$250, Long Rapids, Pasen.
Witt Otto, f, 7, 80, \$150, Sanborn, Ossineke.
Woelk Wm, 9, 40, \$50, Ossineke, Alpena.
Wolf Bernard, merchant, 31, 17½, \$95, Maple Ridge, Alpena
Woodward John, f, 10, 40, \$120, Wilson, Alpena.
Woolever Wm, painter, 34, 80, \$200, Alpena, Alpena.
Workman John, f lab, 21, 40, \$120, Green.
Wright Eugene & Elizabeth, f, 28-33, 80, \$350, Ossineke, Hubbard Lake.
Wudkowski Jacob, f, 10, 80, \$300, Maple Ridge, Cathro.
Wylemski John, f, 2, 3, 162, \$325, Maple Ridge, Cathro.
Wynne Henry, f, 12, 200, \$460, Long Rapids, Long Rapids
Yake Susan, f, 17, 40, \$160, Long Rapids, Long Rapids.
Yake Wm, f, 36, 40, \$80, Long Rapids, Orchard Hill.
Yeska Wm, f, 15-16, 80, \$90, Wilson, Alpena.
Yollop Theresa, f, 18, 100, \$380, Wilson, Alpena.
Yuchasz Joseph, f, 17, 20, 120, \$225, Maple Ridge, Bolton.
Zaborneau Herman, f, 1, 80, \$250, Long Rapids, Pasen.
Zansnewski John, f, 2, 10, 160, \$480, Maple Ridge, Cathro.
Zeiger Adolph, f, 5-7, 80, \$170, Ossineke, Alpena.
Zink Ernest, f, 35, 80, \$270, Maple Ridge, Alpena.

CAUTION.

Pay no money in advance to itinerant Directory Canvassers. We are led to mention this from the fact that certain parties have been fraudulently using our publications as specimens, and by that means collecting moneys in advance. Before signing an order, see that it has the name of R. L. POLK & CO. printed thereon. We ask no payment until the work is delivered, and our solicitors have strict orders not to take payment for either advertisements or subscriptions.

R. L. POLK & CO.

FOR LISTS OF NAMES, R. L. POLK & CO.,
ANY TRADE, BUSINESS OR PROFESSION, Address . . .
DETROIT & CHICAGO

Do You

wish to combine pleasure and business, and at the same time recuperate from the effects of mental and physical overwork? Take a trip to the wonderful

HOT SPRINGS

of Arkansas, "THE CARLSBAD OF AMERICA," where you may regain your Health, have a royal time, or, by investments in choice Arkansas timber lands, or lead and zinc mining, make a fortune, or double the one you already have. A trip to

TEXAS,

where spring makes her winter home, will well repay you. The most eminent physicians in the United States agree that the climate of Texas is most admirably adapted to the relief or cure of those suffering from bronchial or pulmonary affections.

MEXICO,

so aptly entitled "The Egypt of the Western World," is full of interest to the tourist and pleasure-seeker (Historic and Picturesque), full of antiquities, interesting and charming to all.

CALIFORNIA,

the land of sunshine and flowers. CHOICE OF TWO ROUTES, Missouri Pacific Railway (known as the "Colorado Short Line"), from St. Louis or Kansas City, through the grand and majestic scenery of the Rocky Mountains, the beautiful "Salt Lake Valley," and on to the Golden Gate.

IRON MOUNTAIN ROUTE from St. Louis, the popular winter route to Arkansas, Texas, Arizona, New Mexico, Mexico and Southern California, where "May reigns in December." No high altitudes, but even temperature and perpetual sunshine the year round.

SPECIAL RATES

and Round Trip Tickets on sale to Hot Springs, Arkansas, all the year round. Special or -way and Round Trip Tickets to Texas, Mexico and California during the winter months; Pullman Buffet Sleeping Cars and Free Chair Cars on all trains.

FREE,

on application; descriptive and illustrated pamphlets on Hot Springs, San Antonio, Missouri, Arkansas, Kansas, Nebraska, Texas and Mexico. Cheap lands for sale in Arkansas and Texas.

For further information, address

H. D. ARMSTRONG,

Traveling Passenger Agent Missouri Pacific Railway and Iron Mountain Route

7 FORT ST. W., DETROIT, MICH.

BISSELL WILSON D.P.A., 111 Adams Street, CHICAGO, ILL.

C. G. WARNER, Vice-President.

W. B. DODDRIDGE, General Manager.

H. C. TOWNSEND, Gen'l Pass. and Ticket Agent.

ST. LOUIS, MO.

THE

CHICAGO, MILWAUKEE & ST. PAUL R'Y

With its 6,150 miles of thoroughly equipped road reaches all principal points in

Northern Illinois, Wisconsin,
Iowa, Minnesota, South Dakota,
North Dakota and Northern
Michigan.



THE LINE OF THE 

PIONEER LIMITED,

THE ONLY PERFECT TRAIN IN THE WORLD.

RUNNING ELECTRIC LIGHTED AND STEAM HEATED
VESTIBULED TRAINS.

All Coupon Ticket Agents in the United States
and Canada sell Tickets via the Chicago,
Milwaukee & St. Paul R'y.

J. T. CONLEY,

Asst. Gen. Pass. Agent,
ST. PAUL.

GEO. H. HEAFFORD,

Gen'l Pass. Agt., Chicago, Ill.

Do You

wish to combine pleasure and business, and at the same time recuperate from the effects of mental and physical overwork? Take a trip to the wonderful

HOT SPRINGS of Arkansas, "THE CARLSBAD OF AMERICA," where you may regain your health, have a royal time, or, by investments in choice Arkansas timber lands, or lead and zinc mining, make a fortune, or double the one you already have. A trip to

TEXAS,

where spring makes her winter home, will well repay you. The most eminent physicians in the United States agree that the climate of Texas is most admirably adapted to the relief or cure of those suffering from bronchial or pulmonary affections.

MEXICO,

so aptly entitled "The Egypt of the Western World," is full of interest to the tourist and pleasure-seeker (Historic and Picturesque), full of antiquities, interesting and charming to all.

CALIFORNIA,

the land of sunshine and flowers. CHOICE OF TWO ROUTES, Missouri Pacific Railway (known as the "Colorado Short Line"), from St. Louis or Kansas City, through the grand and majestic scenery of the Rocky Mountains, the beautiful "Salt Lake Valley," and on to the Golden Gate.

IRON MOUNTAIN ROUTE from St. Louis, the popular winter route to Arkansas, Texas, Arizona, New Mexico, Mexico and Southern California, where "May reigns in December." No high altitudes, but even temperature and perpetual sunshine the year round.

SPECIAL RATES

and Round Trip Tickets on sale to Hot Springs, Arkansas, all the year round. Special or -way and Round Trip Tickets to Texas, Mexico and California during the winter months; Pullman Buffet Sleeping Cars and Free Chair Cars on all trains.

FREE,

on application; descriptive and illustrated pamphlets on Hot Springs, San Antonio, Missouri, Arkansas, Kansas, Nebraska, Texas and Mexico. Cheap lands for sale in Arkansas and Texas.

For further information, address

H. D. ARMSTRONG,

Traveling Passenger Agent Missouri Pacific Railway and Iron Mountain Route
7 FORT ST. W., DETROIT, MICH.

BISSELL WILSON D.P.A., 111 Adams Street, CHICAGO, ILL.
C. G. WARNER, Vice-President. W. B. DODDRIDGE, General Manager.

H. C. TOWNSEND, Gen'l Pass. and Ticket Agent.

ST. LOUIS, MO.

THE

CHICAGO, MILWAUKEE & ST. PAUL R'Y

With its 6,150 miles of thoroughly equipped road reaches all principal points in

**Northern Illinois, Wisconsin,
Iowa, Minnesota, South Dakota,
North Dakota and Northern
Michigan.**



THE LINE OF THE 

PIONEER LIMITED,

THE ONLY PERFECT TRAIN IN THE WORLD.

*RUNNING ELECTRIC LIGHTED AND STEAM HEATED
VESTIBULED TRAINS.*

All Coupon Ticket Agents in the United States and Canada sell Tickets via the Chicago, Milwaukee & St. Paul R'y.

J. T. CONLEY,

Asst. Gen. Pass. Agent.

ST. PAUL.

GEO. H. HEAFFORD,

Gen'l Pass. Agt., Chicago, Ill.

The Popular Scenic Route

BETWEEN

CHICAGO, NEW YORK and PHILADELPHIA.

SOLID VESTIBULED TRAIN SERVICE VIA

Grand Trunk Railway System

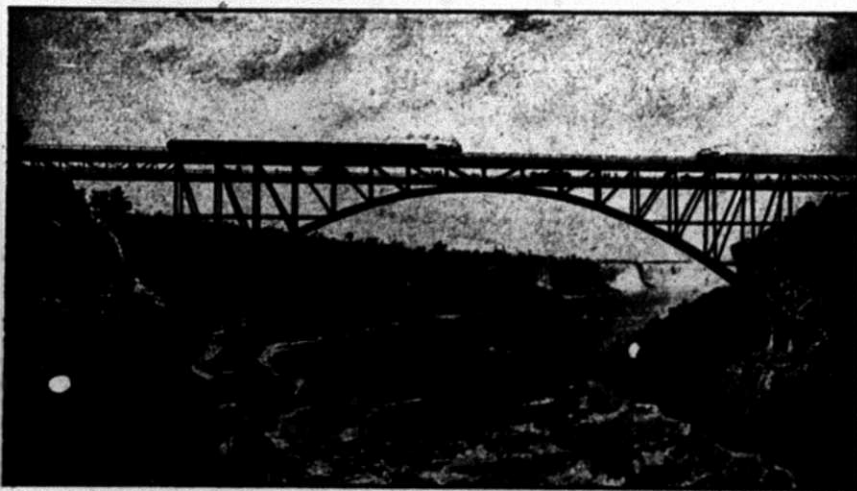
IN CONNECTION WITH THE

Picturesque Lehigh Valley Railroad, via Niagara Falls.

**GRAND TRUNK NEW SINGLE ARCH DOUBLE TRACK STEEL BRIDGE
OVER THE NIAGARA RIVER.**

The new bridge is a single steel arch of 550 feet in length, supplemented by a trussed span, at either end, of 115 feet in length. This with the approaches, makes the total length of the bridge slightly over 1,100 feet. The railway tracks surmounting the bridge are 252 feet above the water. The bridge has two decks or floors. On the upper floor there are two tracks for railway purposes exclusively, while the lower floor contains a wide central carriage-way, double electric railway tracks, and on either side passage-way for pedestrians.

As an evidence of the enormous strength of this beautiful structure, the arch is designed to carry on each railway track a load of two locomotives with four pairs of drivers each and 40,000 pounds on each pair, followed by a train of 3,500 pounds per running foot, and is designed to carry in addition a live load of 3,000 pounds per running foot on the lower floor. The general public will, however, probably be better able to arrive at a correct understanding of the enormous sustaining power of the new bridge by the fact that it is calculated to sustain a weight of something over six times the sustaining capacity of the historic Suspension Bridge, which it replaces.



DIRECT LINE FROM CHICAGO TO

Detroit, Mt. Clemens, Saginaw Valley, Toronto, Montreal and All Canadian Points. Also Boston, via Montreal.

PULLMAN PALACE SLEEPING CARS.

For Rates, Sleeping Car Accommodations and Further Information Apply to

| | | |
|--|--|--|
| CHAS. M. HAYS, General Manager, Montreal. | GEO. B. REEVE, General Traffic Manager, Montreal. | W. E. DAVIS, Gen'l Pass. & Tkt. Agt., Montreal. |
| GEO. T. BELL, Asst. Gen'l Pass. & Tkt. Agt., Chicago. | | |

R. L. POLK, President. A. C. DANSEY, Vice-President. J. W. WEEKS, Sec'y and Treasurer.

INCORPORATED 1885.

ESTABLISHED 1870.

HEAD OFFICE, DETROIT, MICH.

R. L. POLK & CO.

PUBLISHERS

Gazetteers and Business Directories

FOR THE STATES OF

| | | |
|--|-----------------------|--------------------|
| MICHIGAN, | WEST VIRGINIA, | CALIFORNIA, |
| ILLINOIS, | KENTUCKY, | WASHINGTON, |
| PENNSYLVANIA, | INDIANA, | COLORADO, |
| NEW JERSEY, | IOWA, | WYOMING, |
| MINNESOTA, | WISCONSIN, | NEW MEXICO. |
| MONTANA and | TEXAS, | UTAH, |
| THE DAKOTAS, | MARYLAND | NEVADA, |
| KANSAS, | OREGON, | ARIZONA, |
| MISSOURI, | TENNESSEE | ARKANSAS |
| ALABAMA, and the DOMINION OF CANADA. IDAHO. | | |

**MEDICAL AND SURGICAL REGISTER OF THE UNITED STATES,
DENTAL REGISTER OF THE UNITED STATES,
ARCHITECTS AND BUILDERS' DIRECTORY OF THE UNITED STATES
MARINE DIRECTORY OF THE GREAT LAKES,
OHIO ARCHITECTS AND BUILDERS' DIRECTORY,
PENNSYLVANIA ARCHITECTS AND BUILDERS' DIRECTORY,
WESTERN NEW YORK ARCHITECTS AND BUILDERS' DIRECTORY,
AND CITY DIRECTORIES**

—FOR—

Baltimore, Md.; Detroit, Grand Rapids, Saginaw, Bay City, Jackson, Lansing, Muskegon, Benton Harbor, Sault Ste. Marie, Ann Arbor, Battle Creek, Kalamazoo, Flint, Alpena, Marquette, and Houghton, Mich.; Toledo, Columbus, Findlay, Newark, Lima, and Columbiana County, Ohio; Jackson and Memphis, Tenn.; Joliet, Ill.; Indianapolis, Lafayette and Fort Wayne, Ind.; Altoona, Butler, Braddock, Pittsburg and Allegheny City Directory, and Pittsburg and Allegheny Business Directory, Pa.; St. Paul, Minneapolis and Duluth, Minn.; Ashland, Oshkosh and Eau Claire, Wis.; Des Moines and Sioux City, Iowa; Portland and Astoria, Ore.; Helena and Butte, Mont.; Seattle, Tacoma and Spokane, Wash.; Salt Lake City and Ogden, Utah.

| | | |
|----------------------|------------------|--------------------|
| DETROIT. | CHICAGO. | PITTSBURG. |
| INDIANAPOLIS. | ST. PAUL. | ST. LOUIS. |
| BALTIMORE. | TOLEDO. | MINNEAPOLIS |
| PORTLAND. | COLUMBUS. | |